



# ELYSIA

OUTDOOR MODULAR KITCHEN BY **FONTANA**  
FORNI

**Why Choose Elysia by Fontana?**

For over 70 years, Fontana Forni has been synonymous with exceptional Italian craftsmanship. Our outdoor steel pizza ovens are a representation of Italian culture, embodying a passion for delicious food and good conversation at the heart of everything we do.

Elysia extends that philosophy with modular outdoor kitchens that are as beautiful as they are functional, offering a true gathering space for family and friends.

With a fully customizable modular design, the kitchens offer versatility, seamlessly fitting into any outdoor space and budget. Their adaptable nature ensures they can evolve with your changing needs.

Each steel module is designed with the Italian craftsmanship you expect from Fontana Forni. Just like our ovens, the assembly is quick and easy.

Elysia is more than just an outdoor kitchen; it's an extension of your home.



**Elysia is the exclusive modular outdoor kitchen by Fontana.**

Imagine spending magical evenings in the moonlight, surrounded by family and friends, sharing moments of pure joy.

Elysia is not just a simple outdoor kitchen: it is the beating heart of your outdoor space, a place where beauty combines with functionality to create unforgettable experiences.

- 1 **Easy and intuitive assembly**  
Available pre-assembled or flat packed
- 2 **Expand your kitchen over time, as your passion grows**  
Easily integrated and modified, accompanying you at every stage of your life
- 3 **Freedom of Design**  
Modular configuration offers maximum customization



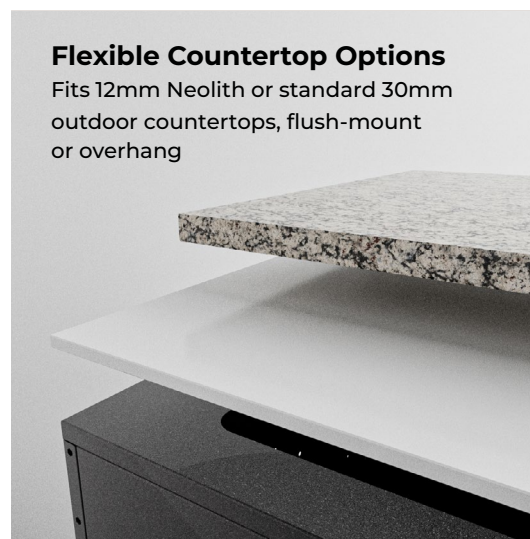
**Italian Craftsmanship. Infinite Possibilities.**

The Italian craftsmanship of the Elysia kitchens, combining sleek design with unmatched modular flexibility. Whether compact or expansive, every configuration is engineered for premium performance, durable elegance, and tailored functionality. Discover how each element—from ovens to storage—works together to create your ideal outdoor culinary space.



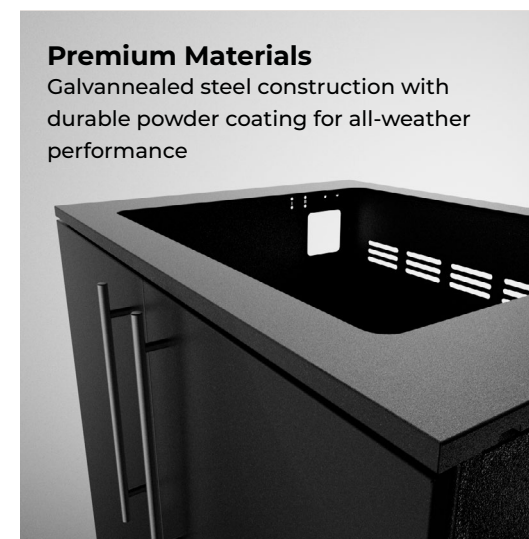
**Modular Design Integration**

Seamlessly pairs with other Elysia components for custom Configurations.



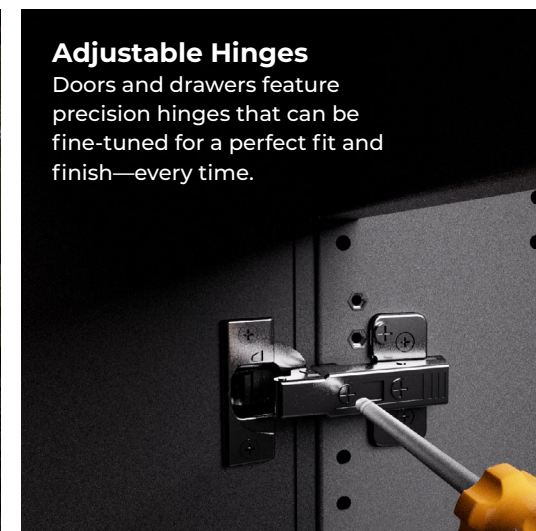
**Flexible Countertop Options**

Fits 12mm Neolith or standard 30mm outdoor countertops, flush-mount or overhang



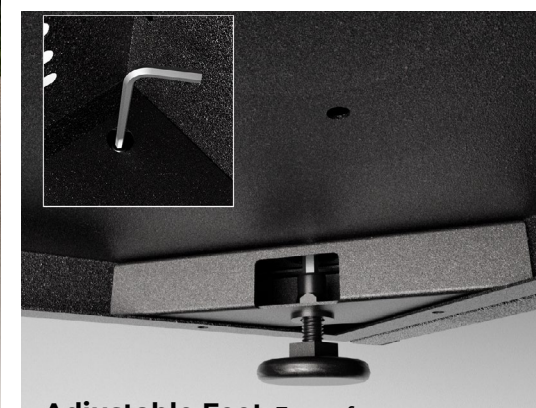
**Premium Materials**

Galvannealed steel construction with durable powder coating for all-weather performance



**Adjustable Hinges**

Doors and drawers feature precision hinges that can be fine-tuned for a perfect fit and finish—every time.



**Adjustable Feet**

Even after assembly, you can easily adjust the leg from inside the unit—no need to tip or move it.



**Smart Utility. Hidden Integration.**

Rear cutouts allow gas, electric, and water lines to run cleanly through Elysia module.

## Elysia, the perfect outdoor modular kitchen for any space and style!

Whether you have a small terrace in town or a large garden, Elysia fits harmoniously into any setting, bringing elegance and functionality.



## Smart Storage, Seamless Integration, Elevated Functionality

Every detail of these storage and corner units is considered—streamlined to enhance organization while preserving the minimalist aesthetic that defines the Elysia system.

### Elysia Module Details



Specifications	Open Shelf n. ref. MOD_SHELF	Sink n. ref. MOD_SINK	Storage 90 n. ref. MOD_STORAGE_90
Dimensions	90cm W x 70cm D x 92cm H	65cm W x 70cm D x 92cm H	90cm W x 70cm D x 92cm H
Weight	52kg	45kg	75kg
Countertop Material	Neolith	Neolith	Neolith
Body Material	Ultra durable powder (Qualicoat) coated galvanized steel	Ultra durable powder (Qualicoat) coated galvanized steel	Ultra durable powder (Qualicoat) coated galvanized steel
Full Depth Shelf	Stainless Steel	---	---
Number of Doors	---	1	---
Number of Drawers	---	---	3
Soft Close Hinge	---	Yes	---
Soft Close Slides	---	---	Yes
Sink and Faucet	---	Stainless Steel	---
Housing for Waste Bin	---	---	---
Accessible Leveling Feet	Yes	Yes	Yes

### Elysia Module Details



Specifications	Storage 65 n. ref. MOD_STORAGE_65	Corner n. ref. MOD_CORNER	Module Kamado* n. ref. MOD_KAMADO
Dimensions	90cm W x 70cm D x 92cm H	90cm W x 90cm D x 92cm H	78.4cm W x 70cm D x 42cm H
Weight	75kg	42kg	38kg
Countertop Material	Neolith	Neolith	Neolith
Body Material	Ultra durable powder (Qualicoat) coated galvanized steel	Ultra durable powder (Qualicoat) coated galvanized steel	Ultra durable powder (Qualicoat) coated galvanized steel
Full Depth Shelf	---	---	N/A
Number of Doors	---	---	---
Number of Drawers	2	---	1
Soft Close Hinge	---	---	---
Soft Close Slides	Yes	---	Yes
Gas Bottle Support	---	---	---
Fontana Oven Compatibility**	Yes	---	---
Accessible Leveling Feet	Yes	Yes	Yes

\* Kamado not included

## Do you already have a Fontana oven? Integrate it into Elysia!

The Elysia module range is designed to accommodate and integrate your Fontana Pizza Oven, making it a distinctive element of your outdoor space.



## An Outdoor Kitchen fit for a Chef

Elysia modules for fridge and grill expand the functionality of your outdoor kitchen for a truly exceptional experience!\*

*\*appliances not included*

## Elysia Module Details



**Module Oven 90\***  
n. ref. MOD\_OVEN\_90

**Module Oven 100\***  
n. ref. MOD\_OVEN\_100

Specifications	Module Oven 90* n. ref. MOD_OVEN_90	Module Oven 100* n. ref. MOD_OVEN_100
Dimensions	90cm W x 70cm D x 92cm H	Cabinet: 90cm W x 70cm D x 92cm H Countertop: 90cm W x 90cm D x 92cm H
Weight	65kg	80kg
Countertop Material	Neolith	Neolith
Body Material	Ultra durable powder (Qualicoat) coated galvanized steel	Ultra durable powder (Qualicoat) coated galvanized steel
Full Depth Shelf	N/A	N/A
Number of Doors	2	2
Number of Drawers	---	---
Soft Close Hinge	Yes	Yes
Soft Close Slides	---	---
Gas Bottle Support	Yes	Yes
Fontana Oven Compatibility*	Maestro 40, Maestro 60, Piero, Ischia**	Capri, Mangiafuoco wood, Margherita wood, Margherita gas, Mangiafuoco gas**
Accessible Leveling Feet	Yes	Yes

## Elysia Module Details



**Fridge\***  
n. ref. MOD\_FRIDGE

**BBQ Lumen 6\***  
n. ref. MOD\_BBQ\_LUMEN 6

Specifications	Fridge* n. ref. MOD_FRIDGE	BBQ Lumen 6* n. ref. MOD_BBQ_LUMEN 6
Dimensions	65cm W x 70cm D x 92cm H	118.4cm W x 70cm D x 92cm H
Weight	33kg	60kg
Countertop Material	Neolith	Neolith
Body Material	Ultra durable powder (Qualicoat) coated galvanized steel	Ultra durable powder (Qualicoat) coated galvanized steel
Full Depth Shelf	---	N/A
Number of Doors	---	2
Number of Drawers	---	---
Soft Close Hinge	---	Yes
Soft Close Slides	---	---
Gas Bottle Support	---	Yes
Fontana Oven Compatibility	---	---
Accessible Leveling Feet	Yes	Yes

\* Oven not included

\*\* Gas ovens are produced for LPG, but a natural gas configuration can be requested at the time of ordering

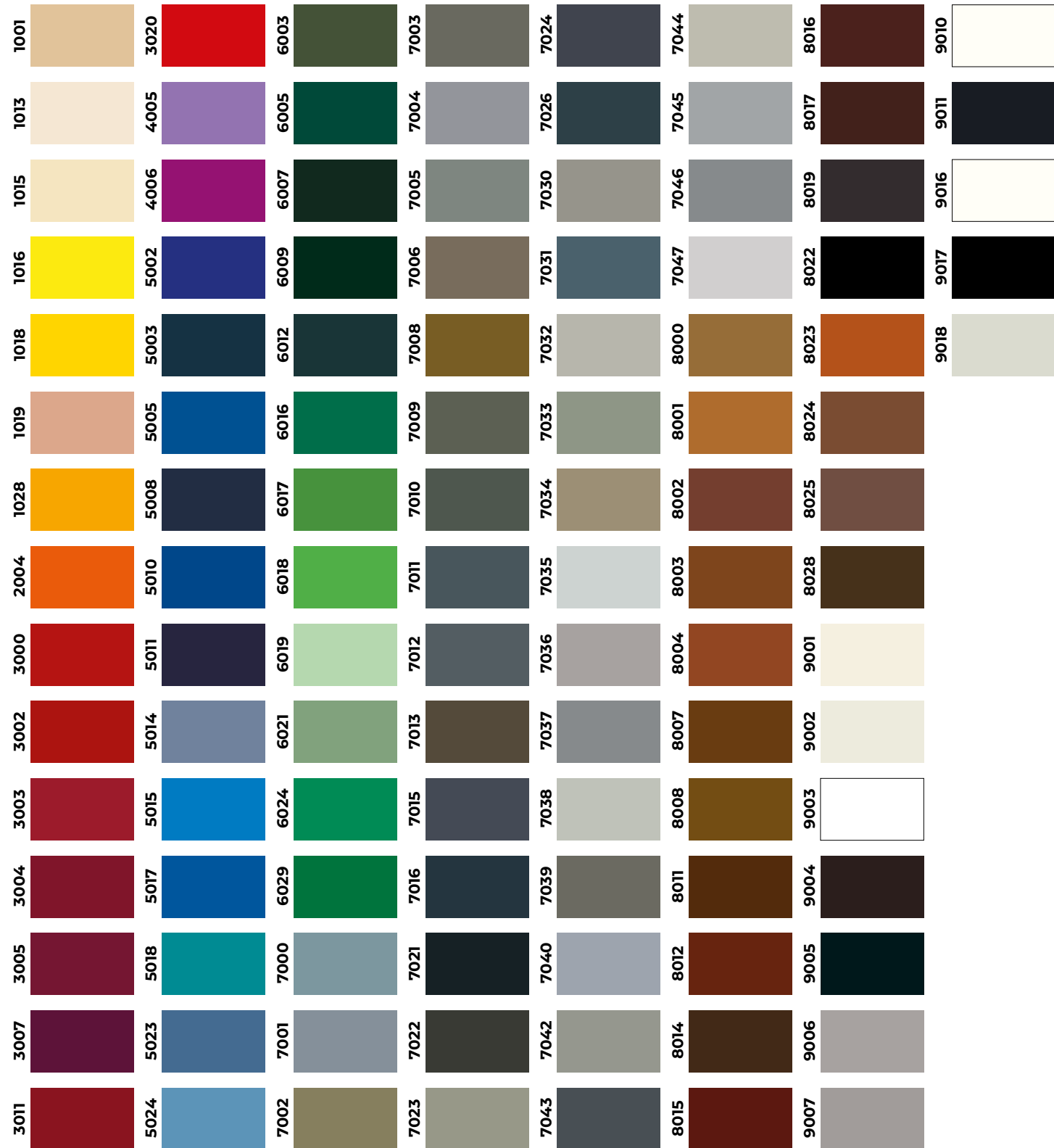
\* Appliances not included

## Colors

### Standard



### Optional



## Counter Top

# NEOLITH

Neolith, the sintered stone resistant to scratches, high temperatures, chemicals and weathering.

### Standard



Neolith **BASALT BLACK** 12 mm

Neolith **PIETRA DI LUNA** 12 mm

## Handles

Stainless steel or black-painted handle, optionally combinable with any configuration. Subtle, elegant and timeless.

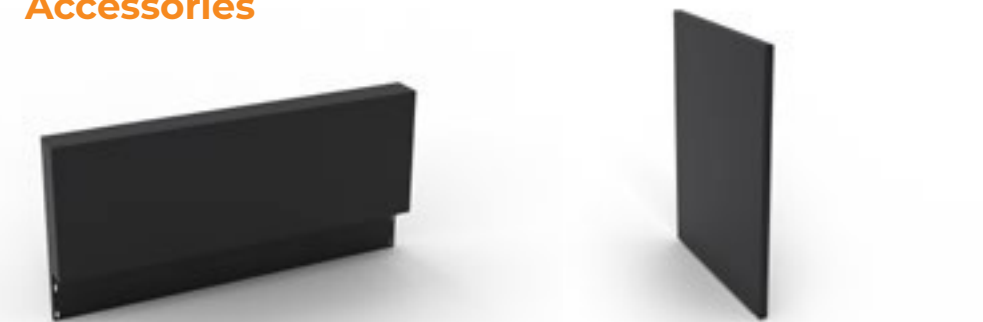
### Standard



**Inox**  
man\_19

**Nero - Black**  
man\_20

## Accessories



### Wall

Code	Dimensions
wall_65	65cm W x 7cm D x 35cm H
wall_90	90cm W x 7cm D x 35cm H
wall_100	100cm W x 7cm D x 35cm H
wall_120	120cm W x 7cm D x 35cm H

**Material:** Ultra durable powder (Qualicoat) coated galvanized steel

### End Panel

Code
end_panel
end_panel_kamado

**Material:** Ultra durable powder (Qualicoat) coated galvanized steel

# ELYSIA

OUTDOOR MODULAR KITCHEN BY **FONTANA**  
FORNI

877.842.9822 | [support@fontanaovens.com](mailto:support@fontanaovens.com) | [FontanaOvens.com](https://FontanaOvens.com)

1305 E Palmetto Street; Florence, South Carolina 29506

