



LUME

BY FIREGEAR





LUME

100% Commercial-Grade Stainless Steel reduced smoke wood fire pit, specially designed to burn more efficiently and emit less smoke. The LUME is a insert unit for SRW Block, Bricks, or other non-combustible material.



WOOD
BURNING



STAINLESS
STEEL



SRW/PAVERS
COMPATIBLE

SINGLE WALL LUME INSERT

LUME-29R / LUME-34R / LUME-36R



ACCESSORIES

LIDS

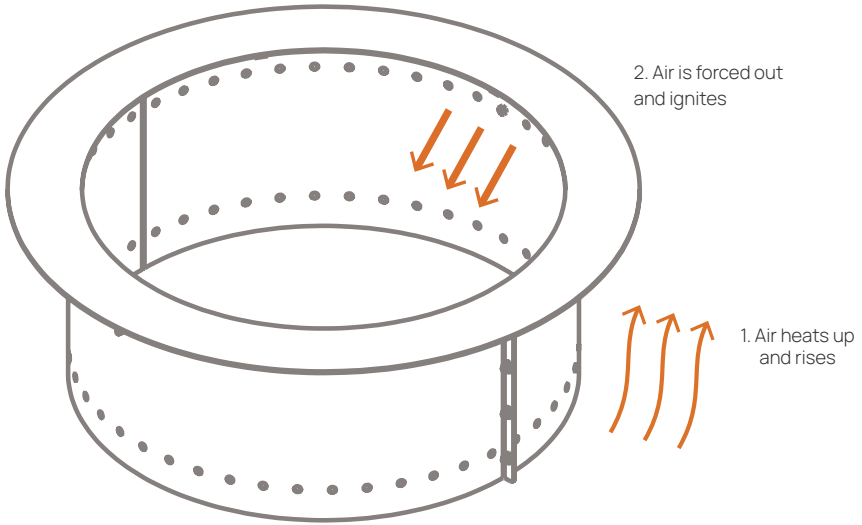
LID-LUME29R : LID, TOP 29R SINGLE WALL FIRE PIT

LID-LUME34R : LID, TOP 34R SINGLE WALL FIRE PIT

LID-LUME36R : LID, TOP 36R SINGLE WALL FIRE PIT



Model	Rim Outer Diam.	Rim Inner Diam.	Base Outer Diam.	Height	Weight	Fits Openings
LUME-29R	34"	26"	29"	12"	21 lbs.	29" - 32"
LUME-34R	39"	31"	34"	12"	25 lbs.	34" - 37"
LUME-36R	41"	34"	36"	12"	26 lbs.	36" - 39"

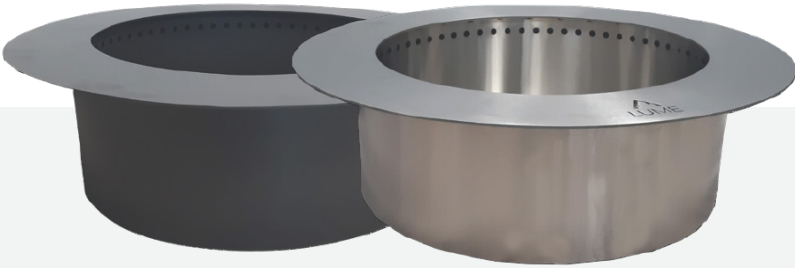


HOW DOES IT BURN

Our fire pits produce less smoke by using smoke as a fuel source—igniting it so it burns up and stays out of your way. The LUME has one stainless steel wall and utilizes the fire pit paver as the second wall. The air is heated up between the walls (1), as it rises to the top it is forced out of the upper holes (2), increasing the oxygen level to the fire and creates a hotter burn. This excess heat ignites the smoke (unburned fuel) and causes the smoke to burn, creating significantly less smoke output.

ROUND DOUBLE WALL LUME INSERT - ROUND

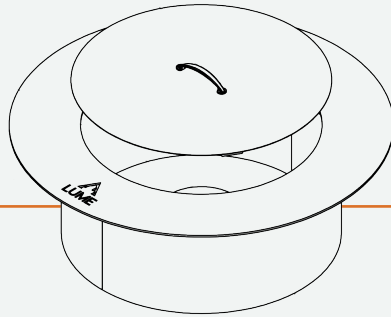
LUME-24R-SS / LUME-30R-SS
LUME-24R-BK / LUME-30R-BK



LUME-24R-BK / LUME-30R-BK

LUME-24R-SS / LUME-30R-SS

FEATURES

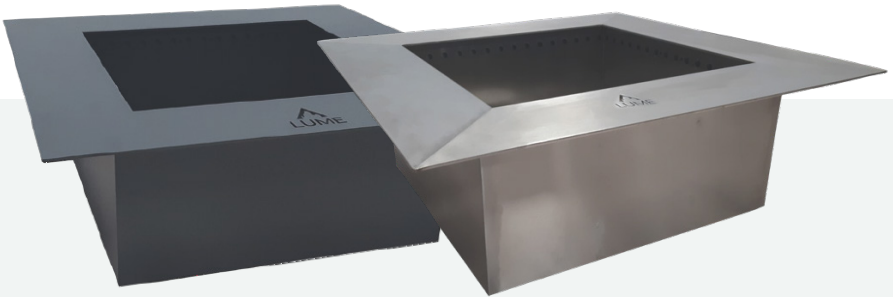


- Double Wall
- Flat lid included
- Available in 24" or 30" diameters
- Stainless Steel (LUME-24R-SS / LUME-30R-SS)
- Black high temperature painted carbon steel (LUME-24R-BK / LUME-30R-BK)
- 24" Cutout dimensions: fits 27"-33"
- 30" Cutout dimensions: fits 32"-39"

Model	Rim Outer Diam.	Rim Inner Diam.	Base Outer Diam.	Height	Weight	Fits Openings
LUME-24R-SS	35"	22"	25.1"	12.062"	111 lbs	27" - 33"
LUME-30R-SS	41"	28"	31.62"	12.06"	143 lbs	32" - 39"
LUME-24R-BK	35"	22"	25.1"	12.062"	113 lbs	27" - 33"
LUME-30R-BK	41"	28"	31.62"	12.06"	146 lbs	32" - 39"

SQUARE DOUBLE WALL LUME INSERT - SQUARE

LUME-24SQ-SS / LUME-24SQ-BK

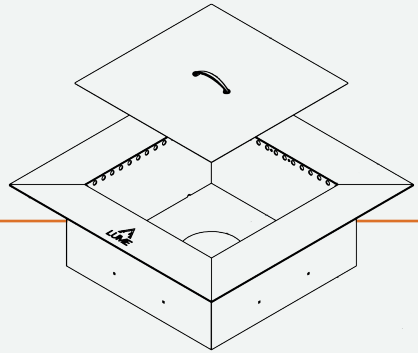


LUME-24SQ-BK

LUME-24SQ-SS

FEATURES

- Double Wall
- Flat lid included
- Stainless Steel (LUME-24SQ-SS)
- Black high temperature painted carbon steel (LUME-24SQ-BK)
- 24" Cutout dimensions: fits 27"-33"



Model	Rim Outer Diam.	Rim Inner Diam.	Base Outer Diam.	Height	Weight	Fits Openings
LUME-24SQ-SS	35"	24"	25.1"	12.19"	135 lbs	27" - 33"
LUME-24SQ-BK	35"	24"	25.1"	12.19"	147 lbs	27" - 33"



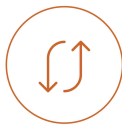


LUME SURROUND

Introducing the LUME Surround, the ultimate combination of style and functionality. Experience the magic of a smoke-less fire pit enclosed within a stunning GFRC bowl, creating an exquisite centerpiece for your outdoor living space.



WOOD
BURNING



SMOKE-LESS
EFFECT



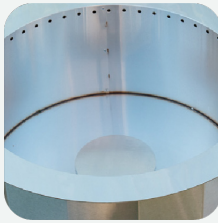
SURROUND
MADE OF GFRC

LUME SURROUND

LUME-SUR1-RA / LUME-SUR1-SL
LUME-SUR1-CH / LUME-SUR1-AR



Model	Color	Overall Dimensions	Base Width	Height	Interior Diameter
LUME-SUR1-RA	Raven	42" W x 18" H	20" W	200 lbs.	23 1/2" W
LUME-SUR1-SL	Slate	42" W x 18" H	20" W	200 lbs.	23 1/2" W
LUME-SUR1-CH	Chocolate	42" W x 18" H	20" W	200 lbs.	23 1/2" W
LUME-SUR1-AR	Arctic	42" W x 18" H	20" W	200 lbs.	23 1/2" W



INCLUDED ACCESSORIES:

LID: LID-LUME-MS-A
Stainless Steel Protected Lid



OPTIONAL ACCESSORIES:

WEATHER COVER: COV-SUR1
100% water-resistant, UV-Protected to prevent fading, custom fitted, and feature soft flannel backing, spring cinch lock.

COLOR OPTIONS



SLATE
SL



RAVEN
RA



ARCTIC
AR



CHOCOLATE
CH





Find Your Lume

Lume Single Wall (LUME-29R, 34R, 36R)

Crafted to address the essential issue of rust that plagues standard firepit inserts, the Lume Single Wall is constructed from commercial-grade stainless steel. Most fire pit inserts are made from painted steel, which may last but lose their aesthetic appeal without regular repainting. This premium material choice ensures that your firepit insert remains visually stunning for the long haul. Our innovative design significantly reduces smoke by facilitating airflow above and below the fuel, enhancing the appearance and performance, and creating a convection space between the insert and the firepit, promoting air movement. Experience the future of firepit inserts with our Lume series, where durability meets design excellence.

Lume Double Wall (LUME-24R-SS/BK, LUME-30R-SS/BK, LUME-24SQ-SS/BK)

Excessive smoke and soot signal incomplete combustion, but with the proper control over air, heat, and fuel, those annoying plumes can be a thing of the past! Our double wall models are engineered with smoke reduction as their core purpose. The primary combustion air enters through the base of the firepit—positioned strategically above the ash to ensure the fire receives the necessary airflow below the fuel. The innovative double-wall design superheats the air within, creating a dynamic convection flow and propelling it upwards. As this oxygen-rich, superheated air becomes pressurized, it exits through the holes just below the rim, providing the essential component above the fuel. This process ignites the air to produce a mesmerizing, controlled flame picture, achieving the most efficient burn with minimal smoke. Experience fire mastery with Firegear's design and innovation, where performance meets elegance.

[FIREGEAROUTDOORS.COM](https://www.firegearoutdoors.com)

VER.040824



WEBSITE