



FIREGEAR[®]

PRODUCT CATALOG

earthcore[®]
We make fire...better.

KALEA BAY OUTDOOR FIREPLACE



PRODUCT Kalea Bay > LED
MODEL OFP-48LECO-NLED

FULL LED SPECTRUM

FEATURES Full spectrum lighting (120VAC Required)
Model Sizes: 36" / 48" / 60" / 72" (all 16" tall opening)

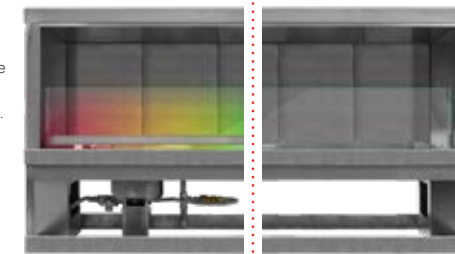
Burner & firebox constructed of weather/corrosion resistant #304 stainless steel.
Ecoflow Electronic Ignition System features built-in safety shutoff in case of loss of flame and auto-relight.
Control Center with each model housed in #304 Stainless Steel Cabinet.
Ships as Natural Gas (NG) or Liquid Propane (LP). Field Convertible to Liquid Propane (LP). *Conversion Kits sold separately.*
Tested & Approved to:
ANSI Z21.97-2017 • CSA 2.41-2017

CONTROL PANEL

On/Off + Low/High + Continuous Pilot
+ Learn + LED On/Off

RGB Dials (3 in total) > Over 16 Million Colors!

TWO DIFFERENT STYLES FOR THE KALEA BAY



FULLY BATTERY OPERATED

FEATURES Fully Battery-operated Ignition
Model Sizes: 48" / 60" (all 16" tall opening)

Burner & firebox constructed of weather/corrosion resistant #304 stainless steel.
Ecoflow Electronic Ignition System features built-in safety shutoff in case of loss of flame and auto-relight.
Control Center with each model housed in #304 Stainless Steel Cabinet.
Ships as Natural Gas (NG) or Liquid Propane (LP). Field Convertible to Liquid Propane (LP). *Conversion Kits sold separately.*
Tested & Approved to:
ANSI Z21.97-2017 • CSA 2.41-2017

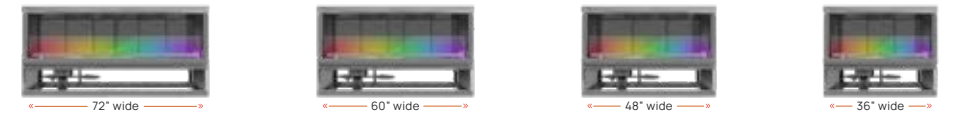
CONTROL PANEL

On/Off + Low/High
+ Continuous Pilot + Learn

Easy access to the Battery Tray

BATTERIES

LED KALEA BAY MODELS



Model	Firebox Size	Gas Type	BTU Low	BTU High	Conv. Kit	See Through Conv. Kit	Weather Cover
OFP-36LECO-NLED	36" W x 16" H x 16" D	NG	18,500	31,000	OFP-36LECO-LPK	78002	OFP-36COV
OFP-48LECO-NLED	48" W x 16" H x 16" D	NG	24,500	43,500	OFP-48LECO-LPK	78004	OFP-48COV
OFP-60LECO-NLED	60" W x 16" H x 16" D	NG	36,000	50,000	OFP-60LECO-LPK	78006	OFP-60COV
OFP-72LECO-NLED	72" W x 16" H x 16" D	NG	42,000	65,000	OFP-72LECO-LPK	78008	OFP-72COV
OFP-36LECO-PLED	36" W x 16" H x 16" D	LP	18,500	31,000	OFP-36LECO-LPK	78002	OFP-36COV
OFP-48LECO-PLED	48" W x 16" H x 16" D	LP	24,500	43,500	OFP-48LECO-LPK	78004	OFP-48COV
OFP-60LECO-PLED	60" W x 16" H x 16" D	LP	36,000	50,000	OFP-60LECO-LPK	78006	OFP-60COV
OFP-72LECO-PLED	72" W x 16" H x 16" D	LP	42,000	65,000	OFP-72LECO-LPK	78012	OFP-72COV

BATTERY KALEA BAY MODELS



Model	Firebox Size	Gas Type	BTU Low	BTU High	Conv. Kit	See Through Conv. Kit	Weather Cover
OFP-48LECO-N	48" W x 16" H x 16" D	NG	24,500	43,500	OFP-48LECO-LPK	78010	OFP-48COV
OFP-60LECO-N	60" W x 16" H x 16" D	NG	36,000	50,000	OFP-60LECO-LPK	78011	OFP-60COV
OFP-48LECO-P	48" W x 16" H x 16" D	LP	24,500	43,500	OFP-48LECO-LPK	78010	OFP-48COV
OFP-60LECO-P	60" W x 16" H x 16" D	LP	36,000	50,000	OFP-60LECO-LPK	78011	OFP-60COV

SEE-THROUGH CONVERSION KITS

Each conversion kit includes a 2-Piece Glass Windshield Kit, Stainless Steel Hood, and LED Tray & Strips (only for LED Models).

Model	Description
78002	For the 36" LED Kalea Bay (NG or LP)
78004	For the 48" LED Kalea Bay (NG or LP)
78006	For the 60" LED Kalea Bay (NG or LP)
78008	For the 72" LED Kalea Bay (NG or LP)
78010	For the 48" BATTERY Kalea Bay (NG or LP)
78011	For the 60" BATTERY Kalea Bay (NG or LP)

WEATHER COVERS

The Kalea Bay Weather Cover is a panel that locks on to the Firebox - it's constructed of #304 Stainless Steel.

Model	Description
OFP-36COV	For the 36" Kalea Bay (NG or LP)
OFP-48COV	For the 48" Kalea Bay (NG or LP)
OFP-60COV	For the 60" Kalea Bay (NG or LP)
OFP-72COV	For the 72" Kalea Bay (NG or LP)

OPTIONAL ACCESSORIES

The items listed below are optional, as the Kalea Bay comes standard with a 10' Wire Harness.

Model	Description
77111	10' long, 6-pin LED Extension wire harness - for LED Models only
77161	10' long, 8-pin Mod Extension wire harness for LED and Non-LED Models
VCS-ECOBUEXT120	2-pin battery pack extension wire to extend the wire on a battery pack of the NON-LED Kalea Bay.


Kalea Bay LP Conversion Kits (Both LED & BATTERY models)
36" Kalea Bay > OFP-36LECO-LPK 60" Kalea Bay > OFP-60LECO-LPK
48" Kalea Bay > OFP-48LECO-LPK 72" Kalea Bay > OFP-72LECO-LPK

Media for the Kalea Bay
Rock Media, Glass, and/or Log Sets are **NOT INCLUDED** with a Kalea Bay. You can find our full selection of Fire Jewelry on page: **48**

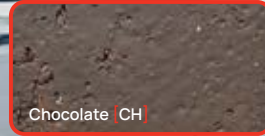
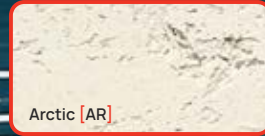
SANCTUARY SERIES

GFRC FIRE TABLES & BOWLS



 COLOR Slate
PRODUCT Sanctuary 2 > AWS Ignition
MODEL SAN2-34DPSAWS-N-SL

SANCTUARY 1-76 GFRC FIRE TABLE



Please note the colors depicted on this page are digitally rendered and/or printed. Actual product color may vary from the images shown on this page.

COLOR Arctic
PRODUCT Sanctuary 1-76 > TPSI Ignition
MODEL SAN176-TPSI-N-AR

SANCTUARY 1-76 COMPLETE SYSTEMS



AWS Ignition System Components shown above

Sanctuary 1-76 with **Stainless Steel** Burner Systems

Model	Color	Ignition	BTU	Gas Type	Conv. Kit
SAN176-AWS-N-AR	Arctic	AWS	125,000	NG	OAS-LPK31*
SAN176-AWS-N-CH	Chocolate	AWS	125,000	NG	OAS-LPK31*
SAN176-AWS-N-RA	Raven	AWS	125,000	NG	OAS-LPK31*
SAN176-AWS-N-SL	Slate	AWS	125,000	NG	OAS-LPK31*
SAN176-AWS-P-AR	Arctic	AWS	125,000	LP	N/A
SAN176-AWS-P-CH	Chocolate	AWS	125,000	LP	N/A
SAN176-AWS-P-RA	Raven	AWS	125,000	LP	N/A
SAN176-AWS-P-SL	Slate	AWS	125,000	LP	N/A
SAN176-TPSI-N-AR	Arctic	TPSI	125,000	NG	TPSI-LPK31
SAN176-TPSI-N-CH	Chocolate	TPSI	125,000	NG	TPSI-LPK31
SAN176-TPSI-N-RA	Raven	TPSI	125,000	NG	TPSI-LPK31
SAN176-TPSI-N-SL	Slate	TPSI	125,000	NG	TPSI-LPK31
SAN176-TPSI-P-AR	Arctic	TPSI	125,000	LP	N/A
SAN176-TPSI-P-CH	Chocolate	TPSI	125,000	LP	N/A
SAN176-TPSI-P-RA	Raven	TPSI	125,000	LP	N/A
SAN176-TPSI-P-SL	Slate	TPSI	125,000	LP	N/A
SAN176-MT-N-AR	Arctic	MT	125,000	NG	OAS-LPK31
SAN176-MT-N-CH	Chocolate	MT	125,000	NG	OAS-LPK31
SAN176-MT-N-RA	Raven	MT	125,000	NG	OAS-LPK31
SAN176-MT-N-SL	Slate	MT	125,000	NG	OAS-LPK31

* also includes the FG-AWS-BPO-P

SANCTUARY 1-76 INDIVIDUAL COMPONENTS



Sanctuary 1-76 > **GFRC Table ONLY**

Model	Color	Dimensions	Weight
SANCTUARY176-AR	Arctic	76" L x 38" W x 16" H	525 lbs
SANCTUARY176-CH	Chocolate	76" L x 38" W x 16" H	525 lbs
SANCTUARY176-RA	Raven	76" L x 38" W x 16" H	525 lbs
SANCTUARY176-SL	Slate	76" L x 38" W x 16" H	525 lbs



AWS Ignition System Components shown above

Sanctuary 1-76 > **Stainless Steel Burner System ONLY**

Model	Burner Type	Ignition System	BTU	Gas Type	Conv. Kit
LOF-5113FHAWS-N-SAN	Stainless Steel	AWS	125,000	NG	OAS-LPK31*
LOF-5113FHAWSP-SAN	Stainless Steel	AWS	125,000	LP	N/A
LOF-5113FHTPSI-N-SAN	Stainless Steel	TPSI	125,000	NG	TPSI-LPK31
LOF-5113FHTPSIP-SAN	Stainless Steel	TPSI	125,000	LP	N/A
LOF-5113FHMT-N-SAN	Stainless Steel	MT	125,000	NG	OAS-LPK31

* also includes the FG-AWS-BPO-P



AWS Ignition System Components shown above

Sanctuary 1-76 > **Pro Series Burner System ONLY**

Model	Burner Type	Ignition System	BTU	Gas Type	Conv. Kit
LOF-5113FHPSAWS-N-SAN	Pro Series	AWS	120,000	NG	N/A
LOF-5113FHPSAWS-P-SAN	Pro Series	AWS	160,000	LP	N/A
LOF-5113FHPSTPSI-N-SAN	Pro Series	TPSI	120,000	NG	N/A
LOF-5113FHPSTPSI-P-SAN	Pro Series	TPSI	160,000	LP	N/A
LOF-5113FHPSMT-N-SAN	Pro Series	MT	120,000	NG	N/A
LOF-5113FHPSMT-P-SAN	Pro Series	MT	160,000	LP	N/A

Pro Series Burner Systems are designed to be NG or LP from the Factory > Firegear does **NOT** offer Conversion Kits.



AWS Ignition System Components shown above

Sanctuary 1-76 with **Pro Series** Burner Systems

Model	Color	Ignition	BTU	Gas Type	Conv. Kit
SAN176-PSAWS-N-AR	Arctic	AWS	120,000	NG	N/A
SAN176-PSAWS-N-CH	Chocolate	AWS	120,000	NG	N/A
SAN176-PSAWS-N-RA	Raven	AWS	120,000	NG	N/A
SAN176-PSAWS-N-SL	Slate	AWS	120,000	NG	N/A
SAN176-PSAWS-P-AR	Arctic	AWS	160,000	LP	N/A
SAN176-PSAWS-P-CH	Chocolate	AWS	160,000	LP	N/A
SAN176-PSAWS-P-RA	Raven	AWS	160,000	LP	N/A
SAN176-PSAWS-P-SL	Slate	AWS	160,000	LP	N/A
SAN176-PSTPSI-N-AR	Arctic	TPSI	120,000	NG	N/A
SAN176-PSTPSI-N-CH	Chocolate	TPSI	120,000	NG	N/A
SAN176-PSTPSI-N-RA	Raven	TPSI	120,000	NG	N/A
SAN176-PSTPSI-N-SL	Slate	TPSI	120,000	NG	N/A
SAN176-PSTPSI-P-AR	Arctic	TPSI	160,000	LP	N/A
SAN176-PSTPSI-P-CH	Chocolate	TPSI	160,000	LP	N/A
SAN176-PSTPSI-P-RA	Raven	TPSI	160,000	LP	N/A
SAN176-PSTPSI-P-SL	Slate	TPSI	160,000	LP	N/A
SAN176-PSMT-N-AR	Arctic	MT	120,000	NG	N/A
SAN176-PSMT-N-CH	Chocolate	MT	120,000	NG	N/A
SAN176-PSMT-N-RA	Raven	MT	120,000	NG	N/A
SAN176-PSMT-N-SL	Slate	MT	120,000	NG	N/A
SAN176-PSMT-P-AR	Arctic	MT	160,000	LP	N/A
SAN176-PSMT-P-CH	Chocolate	MT	160,000	LP	N/A
SAN176-PSMT-P-RA	Raven	MT	160,000	LP	N/A
SAN176-PSMT-P-SL	Slate	MT	160,000	LP	N/A

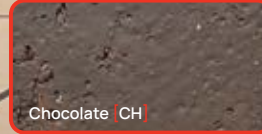
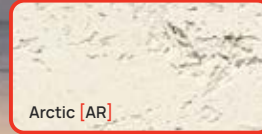
OPTIONAL ACCESSORIES FOR THE SANCTUARY 1-76 SOLD SEPARATELY



Weather Cover
 Weather Cover for the Sanctuary 1-76
MODEL: COVER-SAN1-76

Pro Series Burner Systems are designed to be NG or LP from the Factory > Firegear does **NOT** offer Conversion Kits.

SANCTUARY 1-56 GFRC FIRE TABLE



Please note the colors depicted on this page are digitally rendered and/or printed. Actual product color may vary from the images shown on this page.

COLOR Slate
PRODUCT Sanctuary 1-56 > MT Ignition
MODEL SAN1-30LHMT-N-SL

SANCTUARY 1-56 COMPLETE SYSTEMS



AWS Ignition System Components shown above

Sanctuary 1-56 with **Stainless Steel** Burner Systems

Model	Color	Ignition	BTU	Gas Type	Conv. Kit
SAN1-30LHAWS-N-AR	Arctic	AWS	100,000	NG	OAS-LPK35*
SAN1-30LHAWS-N-CH	Chocolate	AWS	100,000	NG	OAS-LPK35*
SAN1-30LHAWS-N-RA	Raven	AWS	100,000	NG	OAS-LPK35*
SAN1-30LHAWS-N-SL	Slate	AWS	100,000	NG	OAS-LPK35*
SAN1-30LHAWS-P-AR	Arctic	AWS	100,000	LP	N/A
SAN1-30LHAWS-P-CH	Chocolate	AWS	100,000	LP	N/A
SAN1-30LHAWS-P-RA	Raven	AWS	100,000	LP	N/A
SAN1-30LHAWS-P-SL	Slate	AWS	100,000	LP	N/A
SAN1-30LHTPSI-AR	Arctic	TPSI	100,000	NG	TPSI-LPK35
SAN1-30LHTPSI-CH	Chocolate	TPSI	100,000	NG	TPSI-LPK35
SAN1-30LHTPSI-RA	Raven	TPSI	100,000	NG	TPSI-LPK35
SAN1-30LHTPSI-SL	Slate	TPSI	100,000	NG	TPSI-LPK35
SAN1-30LHTPSI-AR-P	Arctic	TPSI	100,000	LP	N/A
SAN1-30LHTPSI-CH-P	Chocolate	TPSI	100,000	LP	N/A
SAN1-30LHTPSI-RA-P	Raven	TPSI	100,000	LP	N/A
SAN1-30LHTPSI-SL-P	Slate	TPSI	100,000	LP	N/A
SAN1-30LHMT-N-AR	Arctic	MT	100,000	NG	OAS-LPK35
SAN1-30LHMT-N-CH	Chocolate	MT	100,000	NG	OAS-LPK35
SAN1-30LHMT-N-RA	Raven	MT	100,000	NG	OAS-LPK35
SAN1-30LHMT-N-SL	Slate	MT	100,000	NG	OAS-LPK35

* also includes the FG-AWS-BPO-P

SANCTUARY 1-56 INDIVIDUAL COMPONENTS



Sanctuary 1-56 > **GFRC Table ONLY**

Model	Color	Dimensions	Weight
SANCTUARY1-AR	Arctic	56" L x 38" W x 16" H	350 lbs
SANCTUARY1-CH	Chocolate	56" L x 38" W x 16" H	350 lbs
SANCTUARY1-RA	Raven	56" L x 38" W x 16" H	350 lbs
SANCTUARY1-SL	Slate	56" L x 38" W x 16" H	350 lbs



AWS Ignition System Components shown above

Sanctuary 1-56 > **Stainless Steel Burner System ONLY**

Model	Burner Type	Ignition System	BTU	Gas Type	Conv. Kit
LOF-3313FHAWS-N-SAN	Stainless Steel	AWS	100,000	NG	OAS-LPK35*
LOF-3313FHAWS-P-SAN	Stainless Steel	AWS	100,000	LP	N/A
LOF-3313FHTPSI-N-SAN	Stainless Steel	TPSI	100,000	NG	TPSI-LPK35
LOF-3313FHTPSI-P-SAN	Stainless Steel	TPSI	100,000	LP	N/A
LOF-3313FHMT-N-SAN	Stainless Steel	MT	100,000	NG	OAS-LPK35

* also includes the FG-AWS-BPO-P



AWS Ignition System Components shown above

Sanctuary 1-56 > **Pro Series Burner System ONLY**

Model	Burner Type	Ignition System	BTU	Gas Type	Conv. Kit
LOF-3313FHPSAWS-N-SAN	Pro Series	AWS	80,000	NG	N/A
LOF-3313FHPSAWS-P-SAN	Pro Series	AWS	110,000	LP	N/A
LOF-3313FHPSTPSI-N-SAN	Pro Series	TPSI	80,000	NG	N/A
LOF-3313FHPSTPSI-P-SAN	Pro Series	TPSI	110,000	LP	N/A
LOF-3313FHPSMT-N-SAN	Pro Series	MT	80,000	NG	N/A
LOF-3313FHPSMT-P-SAN	Pro Series	MT	110,000	LP	N/A

Pro Series Burner Systems are designed to be NG or LP from the Factory > Firegear does **NOT** offer Conversion Kits.



AWS Ignition System Components shown above

Sanctuary 1-56 with **Pro Series** Burner Systems

Model	Color	Ignition	BTU	Gas Type	Conv. Kit
SAN1-PS30LHAWS-N-AR	Arctic	AWS	80,000	NG	N/A
SAN1-PS30LHAWS-N-CH	Chocolate	AWS	80,000	NG	N/A
SAN1-PS30LHAWS-N-RA	Raven	AWS	80,000	NG	N/A
SAN1-PS30LHAWS-N-SL	Slate	AWS	80,000	NG	N/A
SAN1-PS30LHAWS-P-AR	Arctic	AWS	110,000	LP	N/A
SAN1-PS30LHAWS-P-CH	Chocolate	AWS	110,000	LP	N/A
SAN1-PS30LHAWS-P-RA	Raven	AWS	110,000	LP	N/A
SAN1-PS30LHAWS-P-SL	Slate	AWS	110,000	LP	N/A
SAN1-PS30LHTPSI-N-AR	Arctic	TPSI	80,000	NG	N/A
SAN1-PS30LHTPSI-N-CH	Chocolate	TPSI	80,000	NG	N/A
SAN1-PS30LHTPSI-N-RA	Raven	TPSI	80,000	NG	N/A
SAN1-PS30LHTPSI-N-SL	Slate	TPSI	80,000	NG	N/A
SAN1-PS30LHTPSI-P-AR	Arctic	TPSI	110,000	LP	N/A
SAN1-PS30LHTPSI-P-CH	Chocolate	TPSI	110,000	LP	N/A
SAN1-PS30LHTPSI-P-RA	Raven	TPSI	110,000	LP	N/A
SAN1-PS30LHTPSI-P-SL	Slate	TPSI	110,000	LP	N/A
SAN1-PS30LHMT-N-AR	Arctic	MT	80,000	NG	N/A
SAN1-PS30LHMT-N-CH	Chocolate	MT	80,000	NG	N/A
SAN1-PS30LHMT-N-RA	Raven	MT	80,000	NG	N/A
SAN1-PS30LHMT-N-SL	Slate	MT	80,000	NG	N/A
SAN1-PS30LHMT-P-AR	Arctic	MT	110,000	LP	N/A
SAN1-PS30LHMT-P-CH	Chocolate	MT	110,000	LP	N/A
SAN1-PS30LHMT-P-RA	Raven	MT	110,000	LP	N/A
SAN1-PS30LHMT-P-SL	Slate	MT	110,000	LP	N/A

Pro Series Burner Systems are designed to be NG or LP from the Factory > Firegear does **NOT** offer Conversion Kits.

OPTIONAL ACCESSORIES FOR THE SANCTUARY 1-56 SOLD SEPARATELY

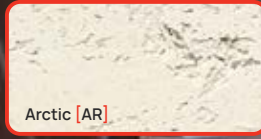


Weather Cover
 Weather Cover for the Sanctuary 1-56
MODEL: COVER-SANI

SANCTUARY 2 GFRC FIRE BOWL



Slate [SL]



Arctic [AR]



Chocolate [CH]



Raven [RA]

Please note the colors depicted on this page are digitally rendered and/or printed. Actual product color may vary from the images shown on this page.

COLOR Raven
PRODUCT Sanctuary 2 > MT Ignition
MODEL SAN2-34DPSMT-P-RA

SANCTUARY 2 COMPLETE SYSTEMS



AWS Ignition System Components shown above

Sanctuary 2 with **Stainless Steel** Burner Systems

Model	Color	Ignition	BTU	Gas Type	Conv. Kit
SAN2-34DBSAWS-N-AR	Arctic	AWS	125,000	NG	OAS-LPK31*
SAN2-34DBSAWS-N-CH	Chocolate	AWS	125,000	NG	OAS-LPK31*
SAN2-34DBSAWS-N-RA	Raven	AWS	125,000	NG	OAS-LPK31*
SAN2-34DBSAWS-N-SL	Slate	AWS	125,000	NG	OAS-LPK31*
SAN2-34DBSAWS-P-AR	Arctic	AWS	125,000	LP	N/A
SAN2-34DBSAWS-P-CH	Chocolate	AWS	125,000	LP	N/A
SAN2-34DBSAWS-P-RA	Raven	AWS	125,000	LP	N/A
SAN2-34DBSAWS-P-SL	Slate	AWS	125,000	LP	N/A
SAN2-34DBSTPSI-AR	Arctic	TPSI	125,000	NG	TPSI-LPK31
SAN2-34DBSTPSI-CH	Chocolate	TPSI	125,000	NG	TPSI-LPK31
SAN2-34DBSTPSI-RA	Raven	TPSI	125,000	NG	TPSI-LPK31
SAN2-34DBSTPSI-SL	Slate	TPSI	125,000	NG	TPSI-LPK31
SAN2-34DBSTPSI-AR-P	Arctic	TPSI	125,000	LP	N/A
SAN2-34DBSTPSI-CH-P	Chocolate	TPSI	125,000	LP	N/A
SAN2-34DBSTPSI-RA-P	Raven	TPSI	125,000	LP	N/A
SAN2-34DBSTPSI-SL-P	Slate	TPSI	125,000	LP	N/A
SAN2-34DBSMT-AR	Chocolate	MT	125,000	NG	OAS-LPK31
SAN2-34DBSMT-CH	Raven	MT	125,000	NG	OAS-LPK31
SAN2-34DBSMT-RA	Slate	MT	125,000	NG	OAS-LPK31
SAN2-34DBSMT-SL	Raven	MT	125,000	NG	OAS-LPK31

* also includes the FG-AWS-BPO-P

SANCTUARY 2 INDIVIDUAL COMPONENTS



Sanctuary 2 > **GFRC Bowl ONLY**

Model	Color	Dimensions	Weight
SANCTUARY2-AR	Arctic	39" Diameter x 18" H	250 lbs
SANCTUARY2-CH	Chocolate	39" Diameter x 18" H	250 lbs
SANCTUARY2-RA	Raven	39" Diameter x 18" H	250 lbs
SANCTUARY2-SL	Slate	39" Diameter x 18" H	250 lbs



AWS Ignition System Components shown above

Sanctuary 2 > **Stainless Steel Burner System ONLY**

Model	Burner Type	Ignition System	BTU	Gas Type	Conv. Kit
FPB-34DBSAWS-N-SAN	Stainless Steel	AWS	125,000	NG	OAS-LPK31*
FPB-34DBSAWS-P-SAN	Stainless Steel	AWS	125,000	LP	N/A
FPB-34DBSTPSI-N-SAN	Stainless Steel	TPSI	125,000	NG	TPSI-LPK31
FPB-34DBSTPSI-P-SAN	Stainless Steel	TPSI	125,000	LP	N/A
FPB-34DBSMT-N-SAN	Stainless Steel	MT	125,000	NG	OAS-LPK31

* also includes the FG-AWS-BPO-P



AWS Ignition System Components shown above

Sanctuary 2 > **Pro Series Burner System ONLY**

Model	Burner Type	Ignition System	BTU	Gas Type	Conv. Kit
FPB-34DPSAWS-N-SAN	Pro Series	AWS	145,000	NG	N/A
FPB-34DPSAWS-P-SAN	Pro Series	AWS	124,000	LP	N/A
FPB-34DPSTPSI-N-SAN	Pro Series	TPSI	145,000	NG	N/A
FPB-34DPSTPSI-P-SAN	Pro Series	TPSI	124,000	LP	N/A
FPB-34DPSMT-N-SAN	Pro Series	MT	145,000	NG	N/A
FPB-34DPSMT-P-SAN	Pro Series	MT	124,000	LP	N/A

Pro Series Burner Systems are designed to be NG or LP from the Factory > Firegear does **NOT** offer Conversion Kits.



AWS Ignition System Components shown above

Sanctuary 2 with **Pro Series** Burner Systems

Model	Color	Ignition	BTU	Gas Type	Conv. Kit
SAN2-34DPSAWS-N-AR	Arctic	AWS	145,000	NG	N/A
SAN2-34DPSAWS-N-CH	Chocolate	AWS	145,000	NG	N/A
SAN2-34DPSAWS-N-RA	Raven	AWS	145,000	NG	N/A
SAN2-34DPSAWS-N-SL	Slate	AWS	145,000	NG	N/A
SAN2-34DPSAWS-P-AR	Arctic	AWS	124,000	LP	N/A
SAN2-34DPSAWS-P-CH	Chocolate	AWS	124,000	LP	N/A
SAN2-34DPSAWS-P-RA	Raven	AWS	124,000	LP	N/A
SAN2-34DPSAWS-P-SL	Slate	AWS	124,000	LP	N/A
SAN2-34DPSTPSI-N-AR	Arctic	TPSI	145,000	NG	N/A
SAN2-34DPSTPSI-N-CH	Chocolate	TPSI	145,000	NG	N/A
SAN2-34DPSTPSI-N-RA	Raven	TPSI	145,000	NG	N/A
SAN2-34DPSTPSI-N-SL	Slate	TPSI	145,000	NG	N/A
SAN2-34DPSTPSI-P-AR	Arctic	TPSI	124,000	LP	N/A
SAN2-34DPSTPSI-P-CH	Chocolate	TPSI	124,000	LP	N/A
SAN2-34DPSTPSI-P-RA	Raven	TPSI	124,000	LP	N/A
SAN2-34DPSTPSI-P-SL	Slate	TPSI	124,000	LP	N/A
SAN2-34DPSMT-N-AR	Arctic	MT	145,000	NG	N/A
SAN2-34DPSMT-N-CH	Chocolate	MT	145,000	NG	N/A
SAN2-34DPSMT-N-RA	Raven	MT	145,000	NG	N/A
SAN2-34DPSMT-N-SL	Slate	MT	145,000	NG	N/A
SAN2-34DPSMT-P-AR	Arctic	MT	124,000	LP	N/A
SAN2-34DPSMT-P-CH	Chocolate	MT	124,000	LP	N/A
SAN2-34DPSMT-P-RA	Raven	MT	124,000	LP	N/A
SAN2-34DPSMT-P-SL	Slate	MT	124,000	LP	N/A

Pro Series Burner Systems are designed to be NG or LP from the Factory > Firegear does **NOT** offer Conversion Kits.

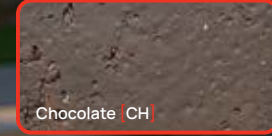
OPTIONAL ACCESSORIES FOR THE SANCTUARY 2

SOLD SEPARATELY



Weather Cover
 Weather Cover for the Sanctuary 2
MODEL: COVER-SAN2

SANCTUARY 3 GFRC FIRE BOWL



Please note the colors depicted on this page are digitally rendered and/or printed. Actual product color may vary from the images shown on this page.



COLOR Arctic
PRODUCT Sanctuary 3 > AWS Ignition
MODEL SAN3-26DPSAWS-N-AR

SANCTUARY 3 COMPLETE SYSTEMS



AWS Ignition System Components shown above

Sanctuary 3 with **Stainless Steel** Burner Systems

Model	Color	Ignition	BTU	Gas Type	Conv. Kit
SAN3-26DBSAWS-N-AR	Arctic	AWS	75,000	NG	OAS-LPK41*
SAN3-26DBSAWS-N-CH	Chocolate	AWS	75,000	NG	OAS-LPK41*
SAN3-26DBSAWS-N-RA	Raven	AWS	75,000	NG	OAS-LPK41*
SAN3-26DBSAWS-N-SL	Slate	AWS	75,000	NG	OAS-LPK41*
SAN3-26DBSAWS-P-AR	Arctic	AWS	75,000	LP	N/A
SAN3-26DBSAWS-P-CH	Chocolate	AWS	75,000	LP	N/A
SAN3-26DBSAWS-P-RA	Raven	AWS	75,000	LP	N/A
SAN3-26DBSAWS-P-SL	Slate	AWS	75,000	LP	N/A
SAN3-26DBSTPSI-AR	Arctic	TPSI	75,000	NG	TPSI-LPK41
SAN3-26DBSTPSI-CH	Chocolate	TPSI	75,000	NG	TPSI-LPK41
SAN3-26DBSTPSI-RA	Raven	TPSI	75,000	NG	TPSI-LPK41
SAN3-26DBSTPSI-SL	Slate	TPSI	75,000	NG	TPSI-LPK41
SAN3-26DBSTPSI-AR-P	Arctic	TPSI	75,000	LP	N/A
SAN3-26DBSTPSI-CH-P	Chocolate	TPSI	75,000	LP	N/A
SAN3-26DBSTPSI-RA-P	Raven	TPSI	75,000	LP	N/A
SAN3-26DBSTPSI-SL-P	Slate	TPSI	75,000	LP	N/A
SAN3-26DBSMT-AR	Arctic	MT	75,000	NG	OAS-LPK41
SAN3-26DBSMT-CH	Chocolate	MT	75,000	NG	OAS-LPK41
SAN3-26DBSMT-RA	Raven	MT	75,000	NG	OAS-LPK41
SAN3-26DBSMT-SL	Slate	MT	75,000	NG	OAS-LPK41

* also includes the FG-AWS-BPO-P

SANCTUARY 3 INDIVIDUAL COMPONENTS



Sanctuary 3 > **GFRC Bowl ONLY**

Model	Color	Dimensions	Weight
SANCTUARY3-AR	Arctic	29" Diameter x 14" H	150 lbs
SANCTUARY3-CH	Chocolate	29" Diameter x 14" H	150 lbs
SANCTUARY3-RA	Raven	29" Diameter x 14" H	150 lbs
SANCTUARY3-SL	Slate	29" Diameter x 14" H	150 lbs



AWS Ignition System Components shown above

Sanctuary 3 > **Stainless Steel Burner System ONLY**

Model	Burner Type	Ignition System	BTU	Gas Type	Conv. Kit
FPB-26DBSAWS-N-SAN	Stainless Steel	AWS	75,000	NG	OAS-LPK41*
FPB-26DBSAWS-P-SAN	Stainless Steel	AWS	75,000	LP	N/A
FPB-26DBSTPSI-N-SAN	Stainless Steel	TPSI	75,000	NG	TPSI-LPK41
FPB-26DBSTPSI-P-SAN	Stainless Steel	TPSI	75,000	LP	N/A
FPB-26DBSMT-N-SAN	Stainless Steel	MT	75,000	NG	OAS-LPK41

* also includes the FG-AWS-BPO-P



AWS Ignition System Components shown above

Sanctuary 3 > **Pro Series Burner System ONLY**

Model	Burner Type	Ignition System	BTU	Gas Type	Conv. Kit
FPB-26DPSAWS-N-SAN	Pro Series	AWS	50,000	NG	N/A
FPB-26DPSAWS-P-SAN	Pro Series	AWS	42,000	LP	N/A
FPB-26DPSTPSI-N-SAN	Pro Series	TPSI	50,000	NG	N/A
FPB-26DPSTPSI-P-SAN	Pro Series	TPSI	42,000	LP	N/A
FPB-26DPSMT-N-SAN	Pro Series	MT	50,000	NG	N/A
FPB-26DPSMT-P-SAN	Pro Series	MT	42,000	LP	N/A

Pro Series Burner Systems are designed to be NG or LP from the Factory > Firegear does **NOT** offer Conversion Kits.



AWS Ignition System Components shown above

Sanctuary 3 with **Pro Series** Burner Systems

Model	Color	Ignition	BTU	Gas Type	Conv. Kit
SAN3-26DPSAWS-N-AR	Arctic	AWS	50,000	NG	N/A
SAN3-26DPSAWS-N-CH	Chocolate	AWS	50,000	NG	N/A
SAN3-26DPSAWS-N-RA	Raven	AWS	50,000	NG	N/A
SAN3-26DPSAWS-N-SL	Slate	AWS	50,000	NG	N/A
SAN3-26DPSAWS-P-AR	Arctic	AWS	42,200	LP	N/A
SAN3-26DPSAWS-P-CH	Chocolate	AWS	42,200	LP	N/A
SAN3-26DPSAWS-P-RA	Raven	AWS	42,200	LP	N/A
SAN3-26DPSAWS-P-SL	Slate	AWS	42,200	LP	N/A
SAN3-26DPSTPSI-N-AR	Arctic	TPSI	50,000	NG	N/A
SAN3-26DPSTPSI-N-CH	Chocolate	TPSI	50,000	NG	N/A
SAN3-26DPSTPSI-N-RA	Raven	TPSI	50,000	NG	N/A
SAN3-26DPSTPSI-N-SL	Slate	TPSI	50,000	NG	N/A
SAN3-26DPSTPSI-P-AR	Arctic	TPSI	42,200	LP	N/A
SAN3-26DPSTPSI-P-CH	Chocolate	TPSI	42,200	LP	N/A
SAN3-26DPSTPSI-P-RA	Raven	TPSI	42,200	LP	N/A
SAN3-26DPSTPSI-P-SL	Slate	TPSI	42,200	LP	N/A
SAN3-26DPSMT-N-AR	Arctic	MT	50,000	NG	N/A
SAN3-26DPSMT-N-CH	Chocolate	MT	50,000	NG	N/A
SAN3-26DPSMT-N-RA	Raven	MT	50,000	NG	N/A
SAN3-26DPSMT-N-SL	Slate	MT	50,000	NG	N/A
SAN3-26DPSMT-P-AR	Arctic	MT	42,200	LP	N/A
SAN3-26DPSMT-P-CH	Chocolate	MT	42,200	LP	N/A
SAN3-26DPSMT-P-RA	Raven	MT	42,200	LP	N/A
SAN3-26DPSMT-P-SL	Slate	MT	42,200	LP	N/A

Pro Series Burner Systems are designed to be NG or LP from the Factory > Firegear does **NOT** offer Conversion Kits.

OPTIONAL ACCESSORIES FOR THE SANCTUARY 3

SOLD SEPARATELY



Weather Cover
 Weather Cover for the Sanctuary 3
MODEL: COVER-SAN3

ABODE GFRFC FIRE & WATER BOWL





COLOR Brown
PRODUCT Abode
MODEL AB-GFRC-FBWR-30W

Please note the colors depicted on this page are digitally rendered and/or printed. Actual product color may vary from the images shown on this page.

LEVELLE STEEL FIRE BOWL




COLOR Stainless Steel
PRODUCT Levelle
MODEL FBL-LAV-SS-24-H

Please note the colors depicted on this page are digitally rendered and/or printed. Actual product color may vary from the images shown on this page.

ABODE GFRFC FIRE & WATER BOWL



 **Brown**

 **Sand**

WHAT'S INCLUDED?
 Bowl | Burner Pan | Ring Burner | MT Ignition | Scupper | Lava Rock

Model	Color	Ignition System	BTU	Dimensions	Gas Type	Conv. Kit
AB-GFRC-FBWSN-30W	Sand	MT	75,000	30" Diameter x 12.6" H	NG	LOF-BO-LP36
AB-GFRC-FBWR-30W	Brown	MT	75,000	30" Diameter x 12.6" H	NG	LOF-BO-LP36

LEVELLE STEEL FIRE BOWL



 **Stainless Steel**


 **Oil Rubbed Bronze**

Model	Color	Ignition System	BTU	Dimensions	Gas Type	Conv. Kit
FBL-LAV-ORB-18-H	Oil Rubbed Bronze	MT	75,000	18" W x 8" H	NG	See Below
FBL-LAV-SS-24-H	Stainless Steel	MT	75,000	24" W x 10" H	NG	See Below

ACCESSORIES REQUIRED FOR OPERATION For **ALL** models above
 For Natural Gas (NG) models listed above, you will need to purchase: **78209** (75,000 BTU Kit for NG)
 For Conversion to Liquid Propane (LP), you will need to purchase: **78210** (75,000 BTU Kit for LP)


LUME SMOKE-LESS FIRE PIT



 PRODUCT Lume Insert
MODEL LUME-34R

LUME INSERT STAINLESS STEEL INSERT




PRODUCT Lume Insert
MODEL LUME-36R

LUME INSERT



Transform your ordinary fire pit into a unique smoke-less design



Stainless Steel Lid for the LUME INSERT
MODEL: LID-LUME29R | LID-LUME34R | LID-LUME36R



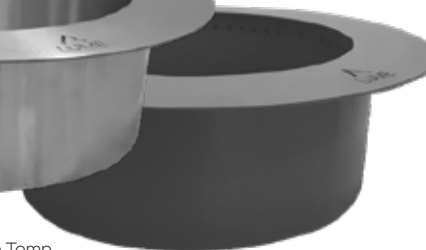
Insert into SRW Block, Bricks, or other Non-Combustible Material

Model	Rim Outer Diam.	Rim Inner Diam.	Base Outer Diam.	Height	Weight	Fits Openings
LUME-29R	34"	26"	29"	12"	21 lbs.	29" - 32"
LUME-34R	39"	31"	34"	12"	25 lbs.	34" - 37"
LUME-36R	41"	34"	36"	12"	26 lbs.	36" - 39"

LUME DOUBLE WALL INSERT



Stainless Steel



Black High Temp Painted Carbon Steel



Stainless Steel

Black High Temp Painted Carbon Steel



All LUME Double Wall Inserts come with matching Lid

Round LUME Double Wall Insert

Model	Rim Outer Diam.	Rim Inner Diam.	Base Outer Diam.	Height	Weight	Fits Openings
LUME-24R-SS	35"	22"	25.1"	12.062"	111 lbs.	27" - 33"
LUME-30R-SS	41"	28"	31.62"	12.05"	143 lbs.	32" - 39"
LUME-24R-BK	35"	22"	25.1"	12.062"	113 lbs.	27" - 33"
LUME-30R-BK	41"	28"	31.62"	12.05"	146 lbs.	32" - 39"

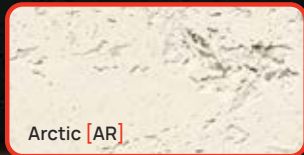
Square LUME Double Wall Insert

Model	Rim Outer Diam.	Rim Inner Diam.	Base Outer Diam.	Height	Weight	Fits Openings
LUME-24SQ-SS	35"	24"	25.1"	12.19"	135 lbs.	27" - 33"
LUME-24SQ-BK	35"	24"	25.1"	12.19"	147 lbs.	27" - 33"

LUME SURROUND 1 GFRC BOWL + LUME INSERT



Slate [SL]



Arctic [AR]




Chocolate [CH]



Raven [RA]

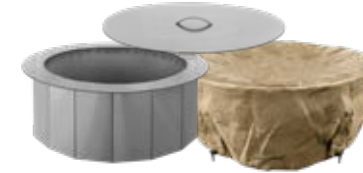
Please note the colors depicted on this page are digitally rendered and/or printed. Actual product color may vary from the images shown on this page.


COLOR Raven
PRODUCT LUME Surround 1
MODEL LUME-SUR1-RA

LUME Surround 1 **INDIVIDUAL COMPONENTS**



Lid



Insert

Cover

LUME Surround 1 > **GFRC Bowl ONLY**

Model	Color	Overall Dimensions	Base Width	Interior Diameter	Weight
SUR1-AR	Arctic	42" W x 18" H	20" W	23 1/2" W	250 lbs.
SUR1-CH	Chocolate	42" W x 18" H	20" W	23 1/2" W	250 lbs.
SUR1-RA	Raven	42" W x 18" H	20" W	23 1/2" W	250 lbs.
SUR1-SL	Slate	42" W x 18" H	20" W	23 1/2" W	250 lbs.

LUME Surround 1 > **Other Individual Components**

Model	Description
SUR1-INSERT	Smoke-Less Outdoor Fire Pit Insert for the LUME Surround 1
COV-SUR1	Cover for LUME Surround 1 (Tan) - 100% water resistant, UV-Protected, Custom Fitted
LID-LUME-MS-A	Stainless Steel Lit for the LUME Surround 1

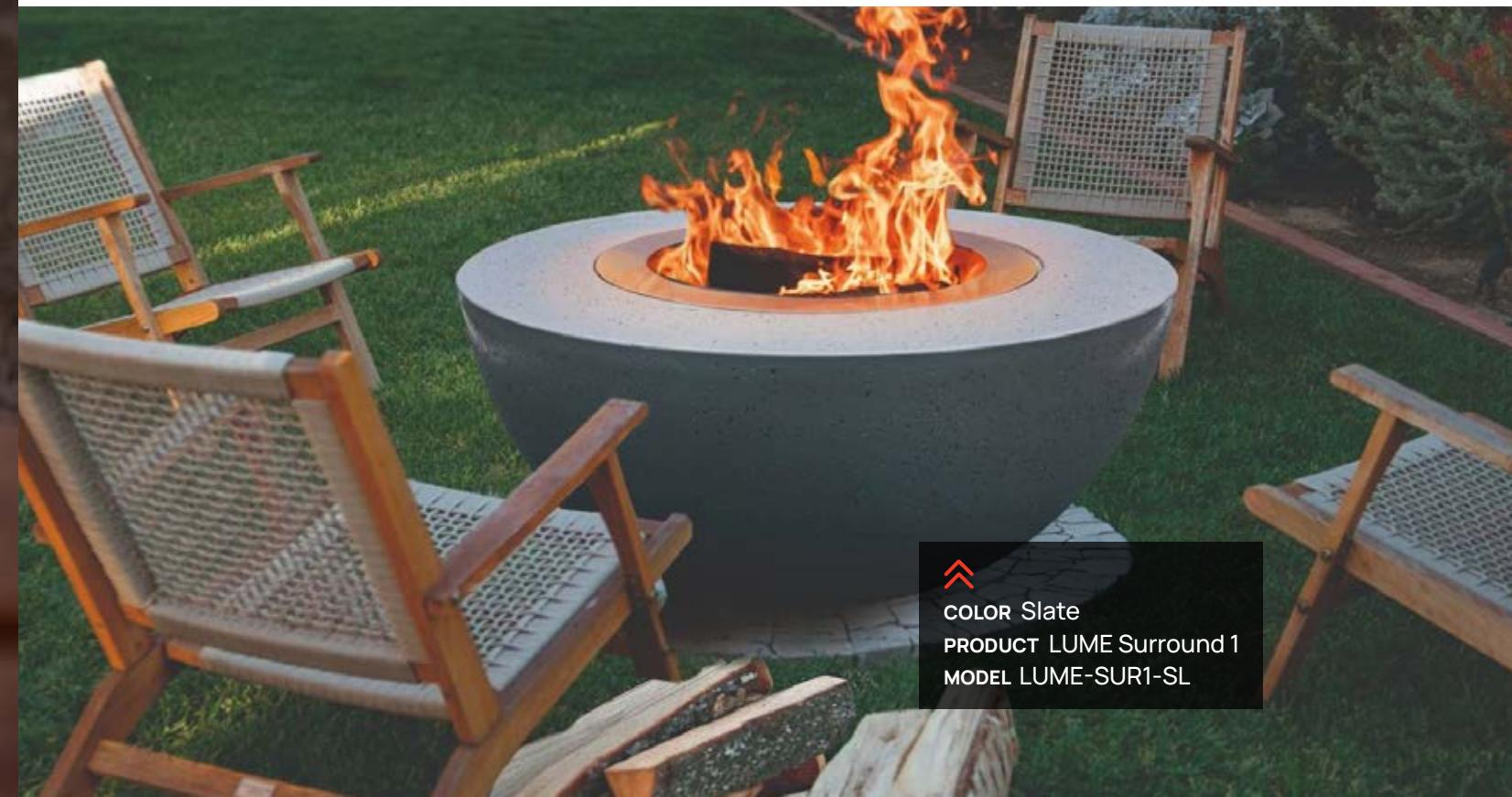
LUME Surround 1 **COMPLETE PACKAGES**




LUME Surround 1 with **LUME Insert**

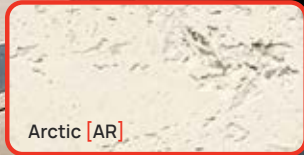
Model	Color	Overall Dimensions	Base Width	Interior Diameter	Weight
LUME-SUR1-AR	Arctic	42" W x 18" H	20" W	23 1/2" W	250 lbs.
LUME-SUR1-CH	Chocolate	42" W x 18" H	20" W	23 1/2" W	250 lbs.
LUME-SUR1-RA	Raven	42" W x 18" H	20" W	23 1/2" W	250 lbs.
LUME-SUR1-SL	Slate	42" W x 18" H	20" W	23 1/2" W	250 lbs.


NOTE: All LUME Surround 1 Models come with a Lid (LID-LUME-MS-A)




COLOR Slate
PRODUCT LUME Surround 1
MODEL LUME-SUR1-SL

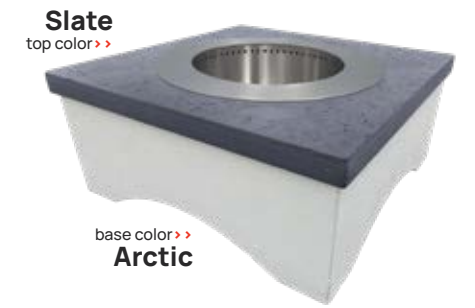
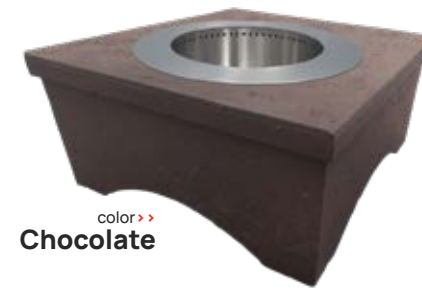
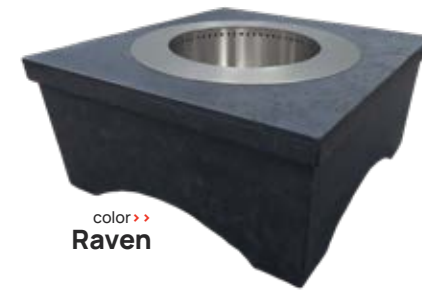
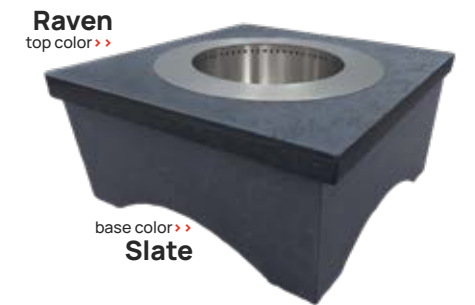
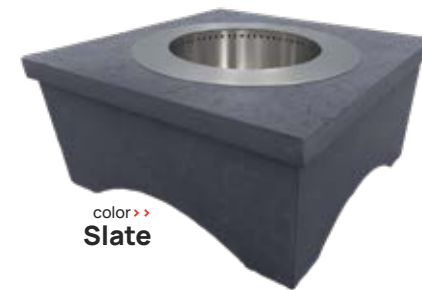
LUME SURROUND 2 GFRC TABLE + LUME INSERT



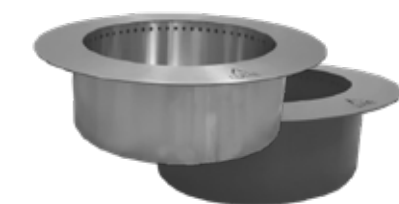

COLOR Slate
GFRC TABLE SUR2-SL
DOUBLE WALL INSERT LUME-24R-SS

Please note the colors depicted on this page are digitally rendered and/or printed. Actual product color may vary from the images shown on this page.

LUME Surround 2 **COLOR OPTIONS**



LUME Surround 2 **INDIVIDUAL COMPONENTS**



LUME Surround 2 > **GFRC Table ONLY**

Model	Color	Base Footprint	Top Footprint	Overall Height	Weight
SUR2-AR	Arctic	38" W x 38" L	42 1/2" W x 42 1/2" L	18"	250 lbs.
SUR2-CH	Chocolate	38" W x 38" L	42 1/2" W x 42 1/2" L	18"	250 lbs.
SUR2-RA	Raven	38" W x 38" L	42 1/2" W x 42 1/2" L	18"	250 lbs.
SUR2-SL	Slate	38" W x 38" L	42 1/2" W x 42 1/2" L	18"	250 lbs.
SUR2-SA	Slate Top Arctic Bottom	38" W x 38" L	42 1/2" W x 42 1/2" L	18"	250 lbs.
SUR2-RS	Raven Top Slate Bottom	38" W x 38" L	42 1/2" W x 42 1/2" L	18"	250 lbs.

LUME Surround 2 Inserts > **LUME Double Wall Inserts**

Model	Color	Shape	Fuel Type	Lid
LUME-24R-SS	Stainless Steel	Round	Wood	Included
LUME-24R-BK	Black Carbon Steel	Round	Wood	Included
LUME-24SQ-SS	Stainless Steel	Square	Wood	Included
LUME-24SQ-BK	Black Carbon Steel	Square	Wood	Included

* Sold Separately

LUME Surround 2 Inserts > **Stainless Steel Burner Systems**

Model	Ignition	Pan Shape	Fuel Type	Lid
FPB-29RBSAWS-N or P	AWS	Round Drop-In	Gas (NG or LP)	*LID-29R
FPB-29RBS22TPSI-N or P	TPSI	Round Drop-In	Gas (NG or LP)	*LID-29R
FPB-29RBS22MT-N	MT	Round Drop-In	Gas (NG or LP Conv. Kit)	*LID-29R

* Sold Separately

LUME Surround 2 Inserts > **Pro Series Burner systems**

Model	Ignition	Pan Shape	Fuel Type	Lid
FPB-29RPSSF18AWS-N or P	AWS	Round Drop-In	Gas (NG or LP)	*LID-29R
FPB-29RPSSF18TPSI-N or P	TPSI	Round Drop-In	Gas (NG or LP)	*LID-29R
FPB-29RPSSF18MT-N or P	MT	Round Drop-In	Gas (NG or LP)	*LID-29R

* Sold Separately

BURNERS + BURNER KITS

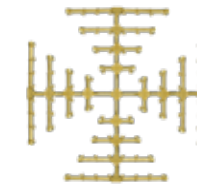
ONLY

BURNER, FLEX, VALVE & KEY

Pro Series BURNER + BURNER KITS

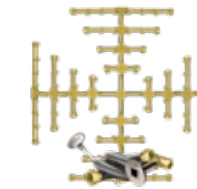
Pro Series Burner Systems are designed to be NG or LP from the Factory > Firegear does NOT offer Conversion Kits.

Snowflake > Burner ONLY



Model	Size	BTU
FG-PSBR-SF11-NG	11"	50,000
FG-PSBR-SF18-NG	18"	145,000
FG-PSBR-SF32-NG	32"	426,000
FG-PSBR-SF11-LP	11"	42,000
FG-PSBR-SF18-LP	18"	124,000
FG-PSBR-SF32-LP	32"	402,000

Snowflake > Burner KIT



Model	Size	BTU
FG-PSBR-SF11-NGK	11"	50,000
FG-PSBR-SF18-NGK	18"	145,000
FG-PSBR-SF32-NGK	32"	426,000
FG-PSBR-SF11-LPK	11"	42,000
FG-PSBR-SF18-LPK	18"	124,000
FG-PSBR-SF32-LPK	32"	402,000

Spur > Burner ONLY



Model	Size	BTU
FG-PSBR-BS10-NG	10"	80,000
FG-PSBR-BS14-NG	14"	125,000
FG-PSBR-BS10-LP	10"	95,000
FG-PSBR-BS14-LP	14"	160,000

Spur > Burner KIT



Model	Size	BTU
FG-PSBR-BS10-NGK	10"	80,000
FG-PSBR-BS14-NGK	14"	125,000
FG-PSBR-BS10-LPK	10"	95,000
FG-PSBR-BS14-LPK	14"	160,000

H Burner > Burner ONLY



Model	Size	BTU
FG-PSBR-H24-NG	24" x 6.75"	80,000
FG-PSBR-H30-NG	30" x 6.75"	95,000
FG-PSBR-H40-NG	40" x 6.75"	120,000
FG-PSBR-H50-NG	50" x 6.75"	160,000
FG-PSBR-H60-NG	60" x 6.75"	180,000
FG-PSBR-H80-NG	80" x 6.75"	250,000
FG-PSBR-H24-LP	24" x 6.75"	110,000
FG-PSBR-H30-LP	30" x 6.75"	115,000
FG-PSBR-H40-LP	40" x 6.75"	150,000
FG-PSBR-H50-LP	50" x 6.75"	175,000
FG-PSBR-H60-LP	60" x 6.75"	200,000
FG-PSBR-H80-LP	80" x 6.75"	240,000

H Burner > Burner KIT



Model	Size	BTU
FG-PSBR-H24-NGK	24" x 6.75"	80,000
FG-PSBR-H30-NGK	30" x 6.75"	95,000
FG-PSBR-H40-NGK	40" x 6.75"	120,000
FG-PSBR-H50-NGK	50" x 6.75"	160,000
FG-PSBR-H60-NGK	60" x 6.75"	180,000
FG-PSBR-H80-NGK	80" x 6.75"	250,000
FG-PSBR-H24-LPK	24" x 6.75"	110,000
FG-PSBR-H30-LPK	30" x 6.75"	115,000
FG-PSBR-H40-LPK	40" x 6.75"	150,000
FG-PSBR-H50-LPK	50" x 6.75"	175,000
FG-PSBR-H60-LPK	60" x 6.75"	200,000
FG-PSBR-H80-LPK	80" x 6.75"	240,000

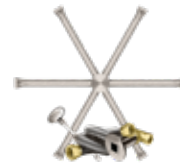
Stainless Steel BURNER + BURNER KITS

Burning Spur > Burner ONLY



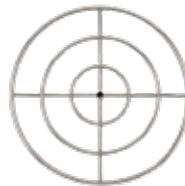
Model	Size	BTU
DBS-12	12"	50,000
DBS-16	16"	75,000
DBS-22	22"	125,000
DBS-31	31"	175,000
DBS-36	36"	250,000

Burning Spur > Burner KIT



Model	Size	BTU
DBS-12K	12"	50,000
DBS-16K	16"	75,000
DBS-22K	22"	125,000
DBS-31K	31"	175,000
DBS-36K	36"	250,000

Fire Ring > Burner ONLY



Model	Size	BTU
FG-FR-18SS	18"	75,000
FG-FR-30SS	30"	250,000
FG-FR-36SS	36"	250,000
FG-FR-48SS	48"	250,000

Fire Ring > Burner KIT



Model	Size	BTU
FG-FR-18SSK	18"	75,000
FG-FR-30SSK	30"	250,000
FG-FR-36SSK	36"	250,000
FG-FR-48SSK	48"	250,000

T Burner > Burner ONLY



Model	Size	BTU
FG-T-21SS	21"	50,000
FG-T-27SS	27"	50,000
FG-T-33SS	33"	75,000
FG-T-45SS	45"	100,000
FG-T-57SS	57"	125,000
FG-T-69SS	69"	150,000
FG-T-81SS	81"	175,000

T Burner > Burner KIT



Model	Size	BTU
FG-T-21SSK	21"	50,000
FG-T-27SSK	27"	50,000
FG-T-33SSK	33"	75,000
FG-T-45SSK	45"	100,000
FG-T-57SSK	57"	125,000
FG-T-69SSK	69"	150,000
FG-T-81SSK	81"	175,000

T Burner > Burner ONLY



Model	Size	BTU
FG-PSBR-T24-NG	24"	50,000
FG-PSBR-T38-NG	38"	90,000
FG-PSBR-T44-NG	44"	100,000
FG-PSBR-T56-NG	56"	135,000
FG-PSBR-T68-NG	68"	140,000
FG-PSBR-T86-NG	86"	145,000
FG-PSBR-T90-NG	90"	165,000
FG-PSBR-T24-LP	24"	60,000
FG-PSBR-T38-LP	38"	95,000
FG-PSBR-T44-LP	44"	110,000
FG-PSBR-T56-LP	56"	140,000
FG-PSBR-T68-LP	68"	170,000
FG-PSBR-T86-LP	86"	215,000
FG-PSBR-T90-LP	90"	225,000


T Burner > Burner KIT



Model	Size	BTU
FG-PSBR-T24-NGK	24"	50,000
FG-PSBR-T38-NGK	38"	90,000
FG-PSBR-T44-NGK	44"	100,000
FG-PSBR-T56-NGK	56"	135,000
FG-PSBR-T68-NGK	68"	140,000
FG-PSBR-T86-NGK	86"	145,000
FG-PSBR-T90-NGK	90"	165,000
FG-PSBR-T24-LPK	24"	60,000
FG-PSBR-T38-LPK	38"	95,000
FG-PSBR-T44-LPK	44"	110,000
FG-PSBR-T56-LPK	56"	140,000
FG-PSBR-T68-LPK	68"	170,000
FG-PSBR-T86-LPK	86"	215,000
FG-PSBR-T90-LPK	90"	225,000

BURNER SYSTEMS READY TO BURN





COLOR Slate
GFRC TABLE SUR2-SL
DOUBLE WALL INSERT LUME-24R-SS

STAINLESS STEEL BURNER SYSTEMS

PAN, STAINLESS STEEL BURNER & IGNITION SYSTEM COMPONENTS





STYLE Square > Flat
MODEL FPB-46SFBS36MT-N

AWS & TPSI
Natural Gas (N) or Propane (P) from the factory

MT
Only sold as Natural Gas (N) - NG to LP Conv. Kits Available


Round > Drop-In > AWS STAINLESS STEEL

Model	PAN Size	BTU
FPB-25RBSAWS-N or P	25"	125,000
FPB-29RBSAWS-N or P	29"	125,000
FPB-33RBSAWS-N or P	33"	175,000




Round > Flat > AWS STAINLESS STEEL

Model	PAN Size	BTU
FPB-26DBSAWS-N or P	26"	125,000
FPB-29DBSAWS-N or P	29"	125,000
FPB-34DBSAWS-N or P	34"	175,000
FPB-39DBSAWS-N or P	39"	250,000
FPB-44DBSAWS-N or P	44"	250,000




Round > Drop-In > TPSI STAINLESS STEEL

Model	PAN Size	BTU
FPB-19RBS16TPSI-N or P	19"	75,000
FPB-25RBS22TPSI-N or P	25"	125,000
FPB-29RBS22TPSI-N or P	29"	125,000
FPB-33RBS31TPSI-N or P	33"	150,000




Round > Flat > TPSI STAINLESS STEEL

Model	PAN Size	BTU
FPB-26DBS22TPSI-N or P	26"	125,000
FPB-29DBS22TPSI-N or P	29"	125,000
FPB-34DBS31TPSI-N or P	34"	150,000
FPB-39DBS31TPSI-N or P	39"	150,000




Round > Drop-In > MT STAINLESS STEEL

Model	PAN Size	BTU
FPB-19RBSMT-N	19"	75,000
FPB-25RBS22MT-N	25"	125,000
FPB-29RBS22MT-N	29"	125,000
FPB-33RBS31MT-N	33"	175,000




Round > Flat > MT STAINLESS STEEL

Model	PAN Size	BTU
FPB-26DBS22MT-N	26"	125,000
FPB-29DBS22MT-N	29"	125,000
FPB-34DBS31MT-N	34"	175,000
FPB-39DBS36MT-N	39"	250,000
FPB-44DBS36MT-N	44"	250,000




Square > Drop-In > AWS STAINLESS STEEL

Model	PAN Size	BTU
FPB-20SBSAWS-N or P	20"	75,000
FPB-26SBSAWS-N or P	26"	125,000
FPB-32SBSAWS-N or P	32"	175,000
FPB-38SBSAWS-N or P	38"	250,000




Square > Flat > AWS STAINLESS STEEL

Model	PAN Size	BTU
FPB-25SFBSAWS-N or P	25"	125,000
FPB-30SFBSAWS-N or P	30"	125,000
FPB-34SFBSAWS-N or P	34"	175,000
FPB-46SFBSAWS-N or P	46"	250,000




Square > Drop-In > TPSI STAINLESS STEEL

Model	PAN Size	BTU
FPB-20SBS16TPSI-N or P	20"	75,000
FPB-26SBS22TPSI-N or P	26"	125,000
FPB-32SBS31TPSI-N or P	32"	150,000




Square > Flat > TPSI STAINLESS STEEL

Model	PAN Size	BTU
FPB-25SFBS22TPSI-N or P	25"	125,000
FPB-30SFBS22TPSI-N or P	30"	125,000
FPB-34SFBS31TPSI-N or P	34"	150,000




Square > Drop-In > MT STAINLESS STEEL

Model	PAN Size	BTU
FPB-20SBSMT-N	20"	75,000
FPB-26SBS22MT-N	26"	125,000
FPB-32SBS31MT-N	32"	175,000
FPB-38SBS36MT-N	38"	250,000




Square > Flat > MT STAINLESS STEEL

Model	PAN Size	BTU
FPB-25SFBS22MT-N	25"	125,000
FPB-30SFBS22MT-N	30"	125,000
FPB-34SFBS31MT-N	34"	175,000
FPB-46SFBS36MT-N	46"	250,000




AWS & TPSI
Natural Gas (N) or Propane (P) from the factory

Linear > H Burner > Drop-In > AWS




Model	Pan Size	BTU
LOF-3012HAWS-N or P	30" x 12"	100,000
LOF-3614HAWS-N or P	36" x 14"	125,000
LOF-4214HAWS-N or P	42" x 14"	150,000
LOF-4814HAWS-N or P	48" x 14"	150,000
LOF-6016HAWS-N or P	60" x 16"	175,000
LOF-7216HAWS-N or P	72" x 16"	200,000
LOF-8416HAWS-N or P	84" x 16"	225,000
LOF-9616HAWS-N or P	96" x 16"	250,000

Linear > H Burner > Drop-In > TPSI



Model	Pan Size	BTU
LOF-3012HTPSI-N or P	30" x 12"	75,000
LOF-3614HTPSI-N or P	36" x 14"	125,000
LOF-4214HTPSI-N or P	42" x 14"	125,000
LOF-4814HTPSI-N or P	48" x 14"	150,000


Linear > H Burner > Drop-In > MT



Model	Pan Size	BTU
LOF-3012HMT-N	30" x 12"	100,000
LOF-3614HMT-N	36" x 14"	125,000
LOF-4214HMT-N	42" x 14"	125,000
LOF-4814HMT-N	48" x 14"	150,000
LOF-6016HMT-N	60" x 16"	175,000
LOF-7216HMT-N	72" x 16"	200,000
LOF-8416HMT-N	84" x 16"	225,000
LOF-9616HMT-N	96" x 16"	250,000


MT
Only sold as Natural Gas (N) - NG to LP Conv. Kits Available

Linear > H Burner > Flat > AWS




Model	Pan Size	BTU
LOF-3014FHAWS-N or P	30" x 14"	100,000
LOF-3614FHAWS-N or P	36" x 14"	100,000
LOF-4814FHAWS-N or P	48" x 14"	150,000
LOF-6016FHAWS-N or P	60" x 16"	175,000
LOF-7216FHAWS-N or P	72" x 16"	200,000
LOF-8416FHAWS-N or P	84" x 16"	225,000
LOF-9616FHAWS-N or P	96" x 16"	250,000

Linear > H Burner > Flat > TPSI



Model	Pan Size	BTU
LOF-3014FHTPSI-N or P	30" x 14"	75,000
LOF-3614FHTPSI-N or P	36" x 14"	125,000
LOF-4814FHTPSI-N or P	48" x 14"	150,000


Linear > H Burner > Flat > MT



Model	Pan Size	BTU
LOF-3014FHMT-N	30" x 14"	100,000
LOF-3313FHMT-N	32 3/4" x 12 3/4"	100,000
LOF-3614FHMT-N	36" x 14"	125,000
LOF-4814FHMT-N	48" x 14"	150,000
LOF-5113FHMT-N	50 3/4" x 12 3/4"	125,000
LOF-6016FHMT-N	60" x 16"	175,000
LOF-7216FHMT-N	72" x 16"	200,000
LOF-8416FHMT-N	84" x 16"	225,000
LOF-9616FHMT-N	96" x 16"	250,000


AWS & TPSI
Natural Gas (N) or Propane (P) from the factory

Linear > T Burner > Drop-In > AWS




Model	Pan Size	BTU
LOF-3006TAWS-N or P	30" x 6"	50,000
LOF-3606TAWS-N or P	36" x 6"	75,000
LOF-4806TAWS-N or P	48" x 6"	100,000
LOF-6006TAWS-N or P	60" x 6"	125,000
LOF-7206TAWS-N or P	72" x 6"	150,000
LOF-8406TAWS-N or P	84" x 6"	175,000
LOF-9606TAWS-N or P	96" x 6"	200,000

Linear > T Burner > Drop-In > TPSI



Model	Pan Size	BTU
LOF-3006TTPSI-N or P	30" x 6"	50,000
LOF-3606TTPSI-N or P	36" x 6"	75,000
LOF-4806TTPSI-N or P	48" x 6"	100,000
LOF-6006TTPSI-N or P	60" x 6"	125,000
LOF-7206TTPSI-N or P	72" x 6"	150,000


Linear > T Burner > Drop-In > MT



Model	Pan Size	BTU
LOF-3006TMT-N	30" x 6"	50,000
LOF-3606TMT-N	36" x 6"	75,000
LOF-4806TMT-N	48" x 6"	100,000
LOF-6006TMT-N	60" x 6"	125,000
LOF-7206TMT-N	72" x 6"	150,000
LOF-8406TMT-N	84" x 6"	175,000
LOF-9606TMT-N	96" x 6"	200,000


MT
Only sold as Natural Gas (N) - NG to LP Conv. Kits Available

Linear > T Burner > Flat > AWS




Model	Pan Size	BTU
LOF-3008FTAWS-N or P	30" x 8"	50,000
LOF-3608FTAWS-N or P	36" x 8"	75,000
LOF-4808FTAWS-N or P	48" x 8"	100,000
LOF-6008FTAWS-N or P	60" x 8"	125,000
LOF-7208FTAWS-N or P	72" x 8"	150,000
LOF-8408FTAWS-N or P	84" x 8"	175,000
LOF-9608FTAWS-N or P	96" x 8"	200,000

Linear > T Burner > Flat > TPSI




Model	Pan Size	BTU
LOF-3008FTTPSI-N or P	30" x 8"	50,000
LOF-3608FTTPSI-N or P	36" x 8"	75,000
LOF-4808FTTPSI-N or P	48" x 8"	100,000
LOF-6008FTTPSI-N or P	60" x 8"	125,000
LOF-7208FTTPSI-N or P	72" x 8"	150,000

Linear > T Burner > Flat > MT



Model	Pan Size	BTU
LOF-3008FTMT-N	30" x 8"	50,000
LOF-3608FTMT-N	36" x 8"	75,000
LOF-4808FTMT-N	48" x 8"	100,000
LOF-6008FTMT-N	60" x 8"	125,000
LOF-7208FTMT-N	72" x 8"	150,000
LOF-8408FTMT-N	84" x 8"	175,000
LOF-9608FTMT-N	96" x 8"	200,000




STYLE Linear T > Flat
MODEL LOF-8406TAWS-N

PRO SERIES BURNER SYSTEMS

PAN, PRO SERIES BURNER & IGNITION SYSTEM COMPONENTS



Pro Series Burner Systems are designed to be NG or LP from the Factory > Firegear does NOT offer Conversion Kits.

Round > Snowflake > Drop-In > AWS

Model	Pan Size	BTU
FPB-19RPSSF11AWS-N	19"	50,000
FPB-25RPSSF18AWS-N	25"	145,000
FPB-29RPSSF18AWS-N	29"	145,000
FPB-19RPSSF11AWS-P	19"	42,000
FPB-25RPSSF18AWS-P	25"	124,000
FPB-29RPSSF18AWS-P	29"	124,000

Round > Snowflake > Drop-In > TPSI

Model	Pan Size	BTU
FPB-19RPSSF11TPSI-N	19"	50,000
FPB-25RPSSF18TPSI-N	25"	145,000
FPB-29RPSSF18TPSI-N	29"	145,000
FPB-19RPSSF11TPSI-P	19"	42,000
FPB-25RPSSF18TPSI-P	25"	124,000
FPB-29RPSSF18TPSI-P	29"	124,000

Round > Snowflake > Drop-In > MT

Model	Pan Size	BTU
FPB-19RPSSF11MT-N	19"	50,000
FPB-25RPSSF18MT-N	25"	145,000
FPB-29RPSSF18MT-N	29"	145,000
FPB-19RPSSF11MT-P	19"	42,000
FPB-25RPSSF18MT-P	25"	124,000
FPB-29RPSSF18MT-P	29"	124,000

Square > Snowflake > Drop-In > AWS

Model	Pan Size	BTU
FPB-20SPSSF11AWS-N	20"	50,000
FPB-26SPSSF18AWS-N	26"	145,000
FPB-38SPSSF32AWS-N	38"	426,000
FPB-20SPSSF11AWS-P	20"	42,000
FPB-26SPSSF18AWS-P	26"	124,000

Square > Snowflake > Drop-In > TPSI

Model	Pan Size	BTU
FPB-20SPSSF11TPSI-N	20"	50,000
FPB-26SPSSF18TPSI-N	26"	145,000
FPB-20SPSSF11TPSI-P	20"	42,000
FPB-26SPSSF18TPSI-P	26"	124,000

Square > Snowflake > Drop-In > MT

Model	Pan Size	BTU
FPB-20SPSSF11MT-N	20"	50,000
FPB-26SPSSF18MT-N	26"	145,000
FPB-38SPSSF32MT-N	38"	426,000
FPB-20SPSSF11MT-P	20"	42,000
FPB-26SPSSF18MT-P	26"	124,000

Round > Snowflake > Flat > AWS

Model	Pan Size	BTU
FPB-26DPSSF18AWS-N	26"	145,000
FPB-29DPSSF18AWS-N	29"	145,000
FPB-39DPSSF32AWS-N	39"	426,000
FPB-44DPSSF32AWS-N	44"	426,000
FPB-26DPSSF18AWS-P	26"	124,000
FPB-29DPSSF18AWS-P	29"	124,000

Round > Snowflake > Flat > TPSI

Model	Pan Size	BTU
FPB-26DPSSF18TPSI-N	26"	145,000
FPB-29DPSSF18TPSI-N	29"	145,000
FPB-26DPSSF18TPSI-P	26"	124,000
FPB-29DPSSF18TPSI-P	29"	124,000

Round > Snowflake > Flat > MT

Model	Pan Size	BTU
FPB-26DPSSF18MT-N	26"	145,000
FPB-29DPSSF18MT-N	29"	145,000
FPB-39DPSSF32MT-N	39"	426,000
FPB-44DPSSF32MT-N	44"	426,000
FPB-26DPSSF18MT-P	26"	124,000
FPB-29DPSSF18MT-P	29"	124,000

Square > Snowflake > Flat > AWS

Model	Pan Size	BTU
FPB-25SFPSSF18AWS-N	25"	145,000
FPB-46SFPSSF32AWS-N	46"	426,000
FPB-25SFPSSF18AWS-P	25"	124,000

Square > Snowflake > Flat > TPSI

Model	Pan Size	BTU
FPB-25SFPSSF18TPSI-N	25"	145,000
FPB-25SFPSSF18TPSI-P	25"	124,000

Square > Snowflake > Flat > MT

Model	Pan Size	BTU
FPB-25SFPSSF18MT-N	25"	145,000
FPB-46SFPSSF32MT-N	46"	426,000
FPB-25SFPSSF18MT-P	25"	124,000



STYLE Square > Flat
MODEL FPB-46SFPSSF32MT-N

Round > Burning Spur > Drop-In > AWS



Model	Pan Size	BTU
FPB-19RPSBR14AWS-N	19"	125,000
FPB-25RPSBR21AWS-N	25"	175,000
FPB-29RPSBR21AWS-N	29"	175,000
FPB-33RPSBR21AWS-N	33"	175,000
FPB-19RPSBR14AWS-P	19"	125,000
FPB-25RPSBR21AWS-P	25"	160,000
FPB-29RPSBR21AWS-P	29"	160,000
FPB-33RPSBR21AWS-P	33"	160,000

Round > Burning Spur > Flat > AWS



Model	Pan Size	BTU
FPB-26DPSBR21AWS-N	26"	175,000
FPB-29DPSBR21AWS-N	29"	175,000
FPB-34DPSBR21AWS-N	34"	175,000
FPB-26DPSBR21AWS-P	29"	175,000
FPB-29DPSBR21AWS-P	39"	175,000
FPB-34DPSBR21AWS-P	44"	175,000

Square > Burning Spur > Drop-In > AWS



Model	Pan Size	BTU
FPB-20SPSBR14AWS-N	20"	125,000
FPB-26SPSBR21AWS-N	26"	175,000
FPB-32SPSBR21AWS-N	32"	175,000
FPB-20SPSBR14AWS-P	20"	160,000
FPB-26SPSBR21AWS-P	26"	175,000
FPB-32SPSBR21AWS-P	32"	175,000

Square > Burning Spur > Flat > AWS



Model	Pan Size	BTU
FPB-25SFPSBR21AWS-N	25"	175,000
FPB-30SFPSBR21AWS-N	30"	175,000
FPB-34SFPSBR21AWS-N	34"	175,000
FPB-25SFPSBR21AWS-P	25"	175,000
FPB-30SFPSBR21AWS-P	30"	175,000
FPB-34SFPSBR21AWS-P	34"	175,000

Round > Burning Spur > Drop-In > TPSI



Model	Pan Size	BTU
FPB-19RPSBR14TPSI-N	19"	125,000
FPB-25RPSBR21TPSI-N	25"	175,000
FPB-29RPSBR21TPSI-N	29"	175,000
FPB-33RPSBR21TPSI-N	33"	175,000
FPB-19RPSBR14TPSI-P	19"	125,000
FPB-25RPSBR21TPSI-P	25"	160,000
FPB-29RPSBR21TPSI-P	29"	160,000
FPB-33RPSBR21TPSI-P	33"	160,000

Round > Burning Spur > Flat > TPSI



Model	Pan Size	BTU
FPB-26DPSBR21TPSI-N	26"	175,000
FPB-29DPSBR21TPSI-N	29"	175,000
FPB-34DPSBR21TPSI-N	34"	175,000
FPB-26DPSBR21TPSI-P	29"	175,000
FPB-29DPSBR21TPSI-P	39"	175,000
FPB-34DPSBR21TPSI-P	44"	175,000

Square > Burning Spur > Drop-In > TPSI



Model	Pan Size	BTU
FPB-20SPSBR14TPSI-N	20"	125,000
FPB-26SPSBR21TPSI-N	26"	175,000
FPB-32SPSBR21TPSI-N	32"	175,000
FPB-20SPSBR14TPSI-P	20"	160,000
FPB-26SPSBR21TPSI-P	26"	175,000
FPB-32SPSBR21TPSI-P	32"	175,000

Square > Burning Spur > Flat > TPSI



Model	Pan Size	BTU
FPB-25SFPSBR21TPSI-N	25"	175,000
FPB-30SFPSBR21TPSI-N	30"	175,000
FPB-34SFPSBR21TPSI-N	34"	175,000
FPB-25SFPSBR21TPSI-P	25"	175,000
FPB-30SFPSBR21TPSI-P	30"	175,000
FPB-34SFPSBR21TPSI-P	34"	175,000

Round > Burning Spur > Drop-In > MT



Model	Pan Size	BTU
FPB-19RPSBR14MT-N	19"	125,000
FPB-25RPSBR21MT-N	25"	175,000
FPB-29RPSBR21MT-N	29"	175,000
FPB-33RPSBR21MT-N	33"	175,000
FPB-19RPSBR14MT-P	19"	125,000
FPB-25RPSBR21MT-P	25"	160,000
FPB-29RPSBR21MT-P	29"	160,000
FPB-33RPSBR21MT-P	33"	160,000

Round > Burning Spur > Flat > MT



Model	Pan Size	BTU
FPB-26DPSBR21MT-N	26"	175,000
FPB-29DPSBR21MT-N	29"	175,000
FPB-34DPSBR21MT-N	34"	175,000
FPB-26DPSBR21MT-P	29"	175,000
FPB-29DPSBR21MT-P	39"	175,000
FPB-34DPSBR21MT-P	44"	175,000

Square > Burning Spur > Drop-In > MT

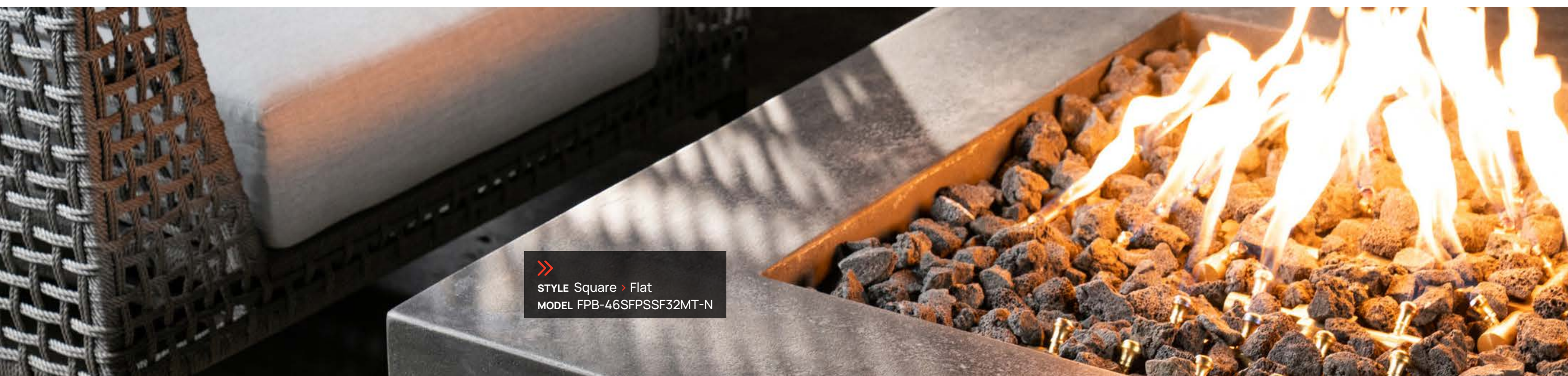


Model	Pan Size	BTU
FPB-20SPSBR14MT-N	20"	125,000
FPB-26SPSBR21MT-N	26"	175,000
FPB-32SPSBR21MT-N	32"	175,000
FPB-20SPSBR14MT-P	20"	160,000
FPB-26SPSBR21MT-P	26"	175,000
FPB-32SPSBR21MT-P	32"	175,000

Square > Burning Spur > Flat > MT




Model	Pan Size	BTU
FPB-25SFPSBR21MT-N	25"	175,000
FPB-30SFPSBR21MT-N	30"	175,000
FPB-34SFPSBR21MT-N	34"	175,000
FPB-25SFPSBR21MT-P	25"	175,000
FPB-30SFPSBR21MT-P	30"	175,000
FPB-34SFPSBR21MT-P	34"	175,000



>>
STYLE Square > Flat
MODEL FPB-46SFSSSF32MT-N


Pro Series Burner Systems are designed to be NG or LP from the Factory > Firegear does NOT offer Conversion Kits.

Linear > T Burner > Drop-In > AWS



Model	Pan Size	BTU
LOF-3006PS24TAWS-N	30" x 6"	50,000
LOF-4206PS38TAWS-N	42" x 6"	90,000
LOF-4806PS44TAWS-N	48" x 6"	100,000
LOF-6006PS56TAWS-N	60" x 6"	135,000
LOF-7206PS68TAWS-N	72" x 6"	140,000
LOF-3006PS24TAWS-P	30" x 6"	60,000
LOF-4206PS38TAWS-P	42" x 6"	95,000
LOF-4806PS44TAWS-P	48" x 6"	110,000


Linear > T Burner > Flat > AWS



Model	Pan Size	BTU
LOF-3008FPS24TAWS-N	30" x 8"	50,000
LOF-4208FPS38TAWS-N	42" x 8"	90,000
LOF-4808FPS44TAWS-N	48" x 8"	100,000
LOF-6008FPS56TAWS-N	60" x 8"	135,000
LOF-7208FPS68TAWS-N	72" x 8"	140,000
LOF-3008FPS24TAWS-P	30" x 8"	60,000
LOF-4208FPS38TAWS-P	42" x 8"	95,000
LOF-4808FPS44TAWS-P	48" x 8"	110,000


Pro Series Burner Systems are designed to be NG or LP from the Factory > Firegear does NOT offer Conversion Kits.

Linear > H Burner > Flat > AWS




Model	Pan Size	BTU
LOF-3010PS246AWS-N	30" x 10"	80,000
LOF-3610PS306AWS-N	36" x 10"	95,000
LOF-4810PS406AWS-N	48" x 10"	120,000
LOF-6010PS506AWS-N	60" x 10"	160,000
LOF-7210PS606AWS-N	72" x 10"	180,000
LOF-9610PS806AWS-N	96" x 10"	250,000
LOF-3010PS246AWS-P	30" x 10"	100,000
LOF-3610PS306AWS-P	36" x 10"	115,000
LOF-4810PS406AWS-P	48" x 10"	150,000
LOF-6010PS506AWS-P	60" x 10"	175,000
LOF-7210PS606AWS-P	72" x 10"	200,000
LOF-9610PS806AWS-P	96" x 10"	240,000

Linear > T Burner > Drop-In > TPSI




Model	Pan Size	BTU
LOF-3006PS24TTPSI-N	30" x 6"	50,000
LOF-4206PS38TTPSI-N	42" x 6"	90,000
LOF-4806PS44TTPSI-N	48" x 6"	100,000
LOF-6006PS56TTPSI-N	60" x 6"	135,000
LOF-7206PS68TTPSI-N	72" x 6"	140,000
LOF-3006PS24TTPSI-P	30" x 6"	60,000
LOF-4206PS38TTPSI-P	42" x 6"	95,000
LOF-4806PS44TTPSI-P	48" x 6"	110,000

Linear > T Burner > Flat > TPSI




Model	Pan Size	BTU
LOF-3008FPS24TTPSI-N	30" x 8"	50,000
LOF-4208FPS38TTPSI-N	42" x 8"	90,000
LOF-4808FPS44TTPSI-N	48" x 8"	100,000
LOF-6008FPS56TTPSI-N	60" x 8"	135,000
LOF-7208FPS68TTPSI-N	72" x 8"	140,000
LOF-3008FPS24TTPSI-P	30" x 8"	60,000
LOF-4208FPS38TTPSI-P	42" x 8"	95,000
LOF-4808FPS44TTPSI-P	48" x 8"	110,000

Linear > H Burner > Flat > TPSI




Model	Pan Size	BTU
LOF-3010PS246TPSI-N	30" x 10"	80,000
LOF-3610PS306TPSI-N	36" x 10"	95,000
LOF-4810PS406TPSI-N	48" x 10"	120,000
LOF-6010PS506TPSI-N	60" x 10"	160,000
LOF-3010PS246TPSI-P	30" x 10"	110,000
LOF-3610PS306TPSI-P	36" x 10"	115,000
LOF-4810PS406TPSI-P	48" x 10"	150,000
LOF-6010PS506TPSI-P	60" x 10"	175,000

Linear > T Burner > Drop-In > MT



Model	Pan Size	BTU
LOF-3006PS24TMT-N	30" x 6"	50,000
LOF-4206PS38TMT-N	42" x 6"	90,000
LOF-4806PS44TMT-N	48" x 6"	100,000
LOF-6006PS56TMT-N	60" x 6"	135,000
LOF-7206PS68TMT-N	72" x 6"	140,000
LOF-3006PS24TMT-P	30" x 6"	60,000
LOF-4206PS38TMT-P	42" x 6"	95,000
LOF-4806PS44TMT-P	48" x 6"	110,000

Linear > T Burner > Flat > MT



Model	Pan Size	BTU
LOF-3008FPS24TMT-N	30" x 8"	50,000
LOF-4208FPS38TMT-N	42" x 8"	90,000
LOF-4808FPS44TMT-N	48" x 8"	100,000
LOF-6008FPS56TMT-N	60" x 8"	135,000
LOF-7208FPS68TMT-N	72" x 8"	140,000
LOF-3008FPS24TMT-P	30" x 8"	60,000
LOF-4208FPS38TMT-P	42" x 8"	95,000
LOF-4808FPS44TMT-P	48" x 8"	110,000

Linear > H Burner > Flat > MT



Model	Pan Size	BTU
LOF-3010PS246MT-N	30" x 10"	80,000
LOF-3610PS306MT-N	36" x 10"	95,000
LOF-4810PS406MT-N	48" x 10"	120,000
LOF-6010PS506MT-N	60" x 10"	160,000
LOF-7210PS606MT-N	72" x 10"	180,000
LOF-9610PS806MT-N	96" x 10"	250,000
LOF-3010PS246MT-P	30" x 10"	110,000
LOF-3610PS306MT-P	36" x 10"	115,000
LOF-4810PS406MT-P	48" x 10"	150,000
LOF-6010PS506MT-P	60" x 10"	175,000
LOF-7210PS606MT-P	72" x 10"	200,000
LOF-9610PS806MT-P	96" x 10"	240,000

NG > LP Conversion Kits

MT Conversion Kits

Model	Ignition	BTU
OAS-LPK47	MT	50,000
OAS-LPK41	MT	75,000
OAS-LPK35	MT	100,000
OAS-LPK31	MT	125,000
OAS-LPK29	MT	150,000
OAS-LPK26	MT	175,000
OAS-LPK22	MT	200,000
OAS-LPK19	MT	225,000
OAS-LPK12	MT	250,000

AWS Conversion Kits

Used in addition to a **MT Conversion Kit** (listed left).

Model	Description
FG-AWS-PBO-P	Pilot Burner Orifice for FG-AWS30VDC-GOEK and FG-AWS30VDC-K (AWS Standard Capacity 30VDC Valve) Conversion from NG to LP

TPSI Conversion Kits

Model	Ignition	BTU
TPSI-LPK47	TPSI	50,000
TPSI-LPK41	TPSI	75,000
TPSI-LPK35	TPSI	100,000
TPSI-LPK31	TPSI	125,000
TPSI-LPK29	TPSI	150,000

Kalea Bay Conversion Kits

Model	Used With
OFP-36LECO-LPK	OFP-36LECO-NLED
OFP-48LECO-LPK	OFP-36LECO-N / NLED
OFP-60LECO-LPK	OFP-36LECO-N / NLED
OFP-72LECO-LPK	OFP-72LECO-NLED



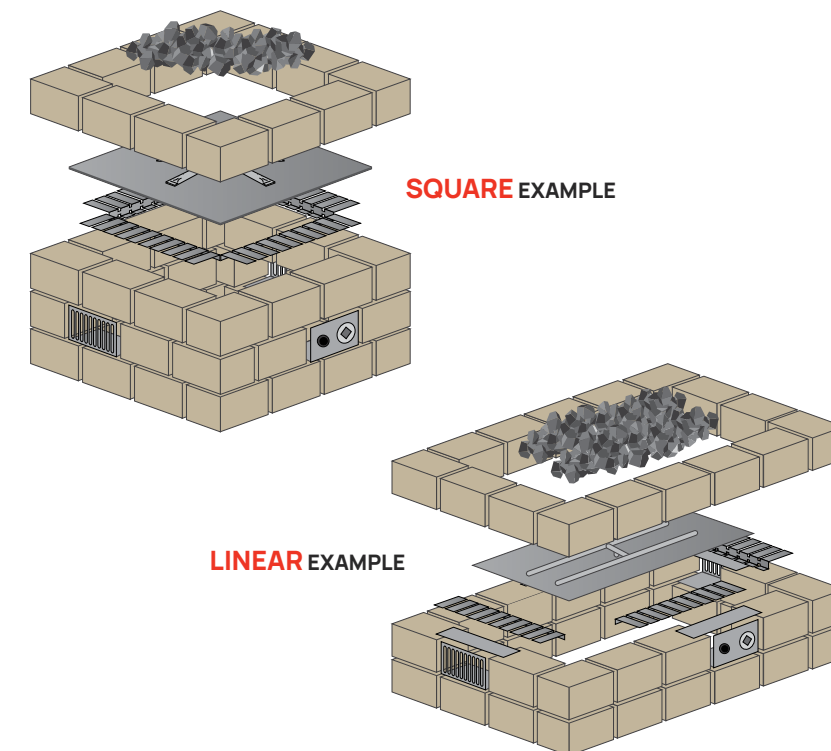
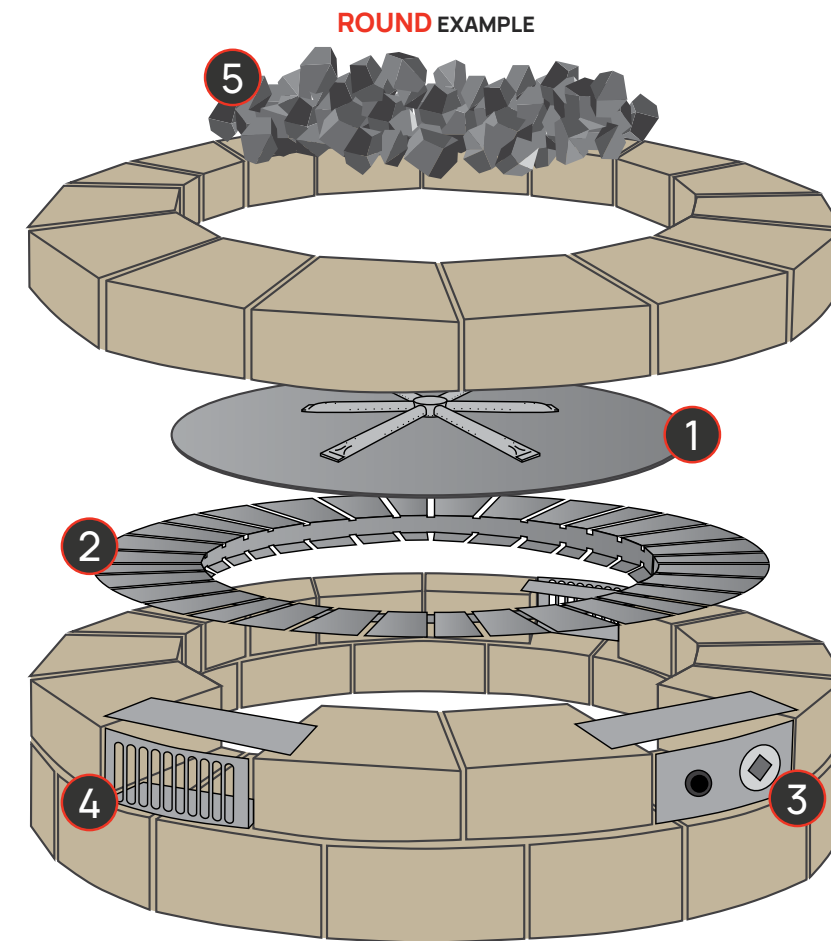
STYLE Square > Flat
MODEL FPB-46SFPSSF32MT-N

BLOCK BURNER SYSTEMS DROP INTO ANY PAVER/BRICK SET


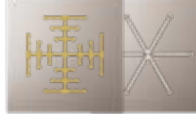



What's in a **BLOCK BURNER SYSTEM**?

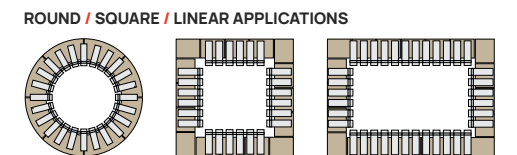
The Block Burner Systems are all-in-one kits assembled either to install into a new Paver or SRW enclosure, or retrofit an existing set up. Each of Firegear's Block Burner Systems is comprised of 5 individual components - see below for a breakdown of what's included in each system.



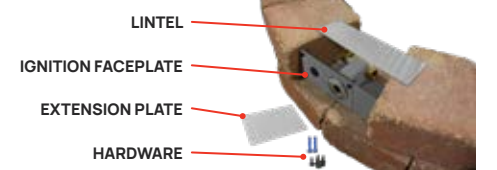
1 Burner System
Our burner systems come in a variety of shapes, sizes, styles and ignition systems in order to fit your custom project or application.

-  **ROUND**
Flat > Pro or Stainless
IGNITION SYSTEM
TPSI or MT
-  **SQUARE**
Flat > Pro or Stainless
Drop-In > Stainless
IGNITION SYSTEM
TPSI or MT
-  **LINEAR**
Flat > Pro or Stainless
IGNITION SYSTEM
TPSI or MT

2 Flexframe
The Flexframe (multiple sizes) gives you the ability to fill the gap between the edge of the enclosure and the pan. Easy installation - easy maintenance.



3 Control Panel
Provides an easy way to install key valves and other ignition system components inside of any existing landscape block enclosure for easy access.



4 Vent Kit
Our Vent Kits make ventilation easy by preventing cutting through landscaping block or awkwardly placing existing blocks in order to provide ventilation.



5 Lava Rock Media
All Block Burner Systems include the appropriate amount of Lava Rock to cover the burner. This creates an air-to-gas mixture for optimal flame size.



Pro Series Block Burner Kits



One model number - each package provides the all-in-one solution for upgrading to a gas fire pit. **ALL-IN-ONE SOLUTION**
All Pro Series models are sold as Natural Gas or Liquid Propane from the factory.

Round > Flat > Pro Series > Block Burner Kits

Model	Ignition	Fits	Burner System	Flexframe	Control Panel	Vent Kit	Media	Gas Type
FPB-29DPS18TPSIN-PK	TPSI	29" to 33"	FPB-29DPSSF18TPSI-N	FLEXFRAME-SS3	PAVER-CP-TPSI	PAVER-VENT-4	FG-LAVA-40	NG
FPB-29DPS18TPSIP-PK	TPSI	29" to 33"	FPB-29DPSSF18TPSI-P	FLEXFRAME-SS3	PAVER-CP-TPSI	PAVER-VENT-4	FG-LAVA-40	LP
FPB-26DPS18MTN-PK	MT	26" to 29"	FPB-26DPSSF18MT-N	FLEXFRAME-SS	PAVER-CP-MT	PAVER-VENT-4	FG-LAVA-10 (x3)	NG
FPB-29DPS18MTN-PK	MT	29" to 33"	FPB-29DPSSF18MT-N	FLEXFRAME-SS3	PAVER-CP-MT	PAVER-VENT-4	FG-LAVA-40	NG
FPB-29DPS18MTN-PK6	MT	29" to 33"	FPB-29DPSSF18MT-N	FLEXFRAME-SS3	PAVER-CP-MT	PAVER-VENT-6	FG-LAVA-40	NG
FPB-39DPS32MTN-PK	MT	39" to 42"	FPB-39DPSSF32MT-N	FLEXFRAME-SS3	PAVER-CP-MT	PAVER-VENT-4	FG-LAVA-40 + FG-LAVA-10	NG
FPB-39DPS32MTN-PK6	MT	39" to 42"	FPB-39DPSSF32MT-N	FLEXFRAME-SS3	PAVER-CP-MT	PAVER-VENT-6	FG-LAVA-40 + FG-LAVA-10	NG
FPB-26DPS18MTP-PK	MT	26" to 29"	FPB-26DPSSF18MT-P	FLEXFRAME-SS	PAVER-CP-MT	PAVER-VENT-4	FG-LAVA-10 (x3)	LP
FPB-29DPS18MTP-PK	MT	29" to 33"	FPB-29DPSSF18MT-P	FLEXFRAME-SS3	PAVER-CP-MT	PAVER-VENT-4	FG-LAVA-40	LP
FPB-29DPS18MTP-PK6	MT	29" to 33"	FPB-29DPSSF18MT-P	FLEXFRAME-SS3	PAVER-CP-MT	PAVER-VENT-6	FG-LAVA-40	LP
FPB-39DPS32MTP-PK	MT	39" to 42"	FPB-39DPSSF32MT-P	FLEXFRAME-SS3	PAVER-CP-MT	PAVER-VENT-4	FG-LAVA-40 + FG-LAVA-10	LP
FPB-39DPS32MTP-PK6	MT	39" to 42"	FPB-39DPSSF32MT-P	FLEXFRAME-SS3	PAVER-CP-MT	PAVER-VENT-6	FG-LAVA-40 + FG-LAVA-10	LP



Square > Flat > Pro Series > Block Burner Kits

Model	Ignition	Fits	Burner System	Flexframe	Control Panel	Vent Kit	Media	Gas Type
FPB-25SFP18TPSIN-PK	TPSI	25" to 30"	FPB-25SFPSSF18TPSI-N	FLEXFRAME-SS	PAVER-CP-TPSI	PAVER-VENT-4	FG-LAVA-10 (x3)	NG
FPB-25SFP18TPSIP-PK	TPSI	25" to 30"	FPB-25SFPSSF18TPSI-P	FLEXFRAME-SS	PAVER-CP-TPSI	PAVER-VENT-4	FG-LAVA-10 (x3)	LP
FPB-25SFP18MTN-PK	MT	25" to 30"	FPB-25SFPSSF18MT-N	FLEXFRAME-SS	PAVER-CP-MT	PAVER-VENT-4	FG-LAVA-10 (x3)	NG
FPB-25SFP18MTP-PK	MT	25" to 30"	FPB-25SFPSSF18MT-P	FLEXFRAME-SS	PAVER-CP-MT	PAVER-VENT-4	FG-LAVA-10 (x3)	LP



Square > Drop-In > Pro Series > Block Burner Kits

Model	Ignition	Fits	Burner System	Flexframe	Control Panel	Vent Kit	Media	Gas Type
FPB-20SPS14MTN-PK	MT	20" to 25"	FPB-20SPSBR14MT-N	FLEXFRAME-SS	PAVER-CP-MT	PAVER-VENT-4	FG-LAVA-10 (x2)	NG
FPB-20SPS14MTP-PK	MT	20" to 25"	FPB-20SPSBR14MT-P	FLEXFRAME-SS	PAVER-CP-MT	PAVER-VENT-4	FG-LAVA-10 (x2)	LP



Linear > Flat > Pro Series > Block Burner Kits

Model	Ignition	Fits	Burner System	Flexframe	Control Panel	Vent Kit	Media	Gas
LOF-3010PS246TPSIN-PK	TPSI	30" to 35" L, 10" to 15" W	LOF-3010PS246TPSI-N	FLEXFRAME-SS	PAVER-CP-TPSI	PAVER-VENT-4	FG-LAVA-10 (x3)	NG
LOF-3610PS306TPSIN-PK	TPSI	36" to 41" L, 10" to 15" W	LOF-3610PS306TPSI-N	FLEXFRAME-SS3	PAVER-CP-TPSI	PAVER-VENT-4	FG-LAVA-40	NG
LOF-4810PS406TPSIN-PK	TPSI	48" to 53" L, 10" to 15" W	LOF-4810PS406TPSI-N	FLEXFRAME-SS3	PAVER-CP-TPSI	PAVER-VENT-4	FG-LAVA-40 + FG-LAVA-10	NG
LOF-3010PS246TPSIP-PK	TPSI	30" to 35" L, 10" to 15" W	LOF-3010PS246TPSI-P	FLEXFRAME-SS	PAVER-CP-TPSI	PAVER-VENT-4	FG-LAVA-10 (x3)	LP
LOF-3610PS306TPSIP-PK	TPSI	36" to 41" L, 10" to 15" W	LOF-3610PS306TPSI-P	FLEXFRAME-SS3	PAVER-CP-TPSI	PAVER-VENT-4	FG-LAVA-40	LP
LOF-4810PS406TPSIP-PK	TPSI	48" to 53" L, 10" to 15" W	LOF-4810PS406TPSI-P	FLEXFRAME-SS3	PAVER-CP-TPSI	PAVER-VENT-4	FG-LAVA-40 + FG-LAVA-10	LP
LOF-3010PS246MTN-PK	MT	30" to 35" L, 10" to 15" W	LOF-3010PS246MT-N	FLEXFRAME-SS	PAVER-CP-MT	PAVER-VENT-4	FG-LAVA-10 (x3)	NG
LOF-3610PS306MTN-PK	MT	36" to 41" L, 10" to 15" W	LOF-3610PS306MT-N	FLEXFRAME-SS3	PAVER-CP-MT	PAVER-VENT-4	LAVA-40	NG
LOF-4810PS406MTN-PK	MT	48" to 53" L, 10" to 15" W	LOF-4810PS406MT-N	FLEXFRAME-SS3	PAVER-CP-MT	PAVER-VENT-4	FG-LAVA-40 + FG-LAVA-10	NG
LOF-6010PS506MTN-PK	MT	60" to 65" L, 10" to 15" W	LOF-6010PS506MT-N	FLEXFRAME-SS3	PAVER-CP-MT	PAVER-VENT-4	FG-LAVA-40 + FG-LAVA-10 (x2)	NG
LOF-3010PS246MTP-PK	MT	30" to 35" L, 10" to 15" W	LOF-3010PS246MT-P	FLEXFRAME-SS	PAVER-CP-MT	PAVER-VENT-4	FG-LAVA-10 (x3)	LP
LOF-3610PS306MTP-PK	MT	36" to 41" L, 10" to 15" W	LOF-3610PS306MT-P	FLEXFRAME-SS3	PAVER-CP-MT	PAVER-VENT-4	LAVA-40	LP
LOF-4810PS406MTP-PK	MT	48" to 53" L, 10" to 15" W	LOF-4810PS406MT-P	FLEXFRAME-SS3	PAVER-CP-MT	PAVER-VENT-4	FG-LAVA-40 + FG-LAVA-10	LP
LOF-6010PS506MTP-PK	MT	60" to 65" L, 10" to 15" W	LOF-6010PS506MT-P	FLEXFRAME-SS3	PAVER-CP-MT	PAVER-VENT-4	FG-LAVA-40 + FG-LAVA-10 (x2)	LP

Stainless Steel Block Burner Kits



One model number - each package provides the all-in-one solution for upgrading to a gas fire pit. **ALL-IN-ONE SOLUTION**
All Stainless Steel models are sold as Natural Gas from the factory. Liquid Propane Conversion Kits are Available.

Round > Flat > Stainless Steel > Block Burner Kits

Model	Ignition	Fits	Burner System	Flexframe	Control Panel	Vent Kit	Media	LP Conv. Kit
FPB-29D22TPSIN-PK	TPSI	29" to 32"	FPB-29DBS22TPSI-N	FLEXFRAME-SS3	PAVER-CP-TPSI	PAVER-VENT-4	FG-LAVA-40	OAS-LPK31
FPB-34D31TPSIN-PK	TPSI	34" to 37"	FPB-34DBS31TPSI-N	FLEXFRAME-SS3	PAVER-CP-TPSI	PAVER-VENT-4	FG-LAVA-40 + FG-LAVA-10	OAS-LPK26
FPB-39D31TPSIN-PK	TPSI	39" to 42"	FPB-39DBS31TPSI-N	FLEXFRAME-SS3	PAVER-CP-TPSI	PAVER-VENT-4	FG-LAVA-40 + FG-LAVA-10	OAS-LPK26
FPB-26D22MTN-PK	MT	26" to 29"	FPB-26DBS22MT-N	FLEXFRAME-SS	PAVER-CP-MT	PAVER-VENT-4	FG-LAVA-10 (x3)	OAS-LPK31
FPB-29D22MTN-PK	MT	29" to 32"	FPB-29DBS22MT-N	FLEXFRAME-SS3	PAVER-CP-MT	PAVER-VENT-4	FG-LAVA-40	OAS-LPK31
FPB-34D31MTN-PK	MT	34" to 37"	FPB-34DBS31MT-N	FLEXFRAME-SS3	PAVER-CP-MT	PAVER-VENT-4	FG-LAVA-40 + FG-LAVA-10	OAS-LPK26
FPB-34D31MTN-PK2	MT	34" to 37"	FPB-34DBS31MT-N	FLEXFRAME-SS3	PAVER-CP-MT	PAVER-VENT-6	FG-LAVA-40 + FG-LAVA-10	OAS-LPK26
FPB-39DBS36MTN-PK	MT	39" to 42"	FPB-39DBS36MT-N	FLEXFRAME-SS3	PAVER-CP-MT	PAVER-VENT-4	FG-LAVA-40 + FG-LAVA-10	OAS-LPK12
FPB-44DBS36MTN-PK	MT	44" to 47"	FPB-44DBS36MT-N	FLEXFRAME-SS3	PAVER-CP-MT	PAVER-VENT-4	FG-LAVA-40 + FG-LAVA-10 (x2)	OAS-LPK12



Square > Flat > Stainless Steel > Block Burner Kits

Model	Ignition	Fits	Burner System	Flexframe	Control Panel	Vent Kit	Media	LP Conv. Kit
FPB-25SF22TPSIN-PK	TPSI	25" to 28"	FPB-25SFBSS22TPSI-N	FLEXFRAME-SS	PAVER-CP-TPSI	PAVER-VENT-4	FG-LAVA-10 (x3)	OAS-LPK31
FPB-30SF22TPSIN-PK	TPSI	30" to 33"	FPB-30SFBSS22TPSI-N	FLEXFRAME-SS3	PAVER-CP-TPSI	PAVER-VENT-4	FG-LAVA-40	OAS-LPK31
FPB-34SF31TPSIN-PK	TPSI	34" to 37"	FPB-34SFBSS31TPSI-N	FLEXFRAME-SS3	PAVER-CP-TPSI	PAVER-VENT-4	FG-LAVA-40 + FG-LAVA-10	OAS-LPK26
FPB-25SF22MTN-PK	MT	25" to 28"	FPB-25SFBSS22MT-N	FLEXFRAME-SS	PAVER-CP-MT	PAVER-VENT-4	FG-LAVA-10 (x3)	OAS-LPK31
FPB-30SF22MTN-PK	MT	30" to 33"	FPB-30SFBSS22MT-N	FLEXFRAME-SS3	PAVER-CP-MT	PAVER-VENT-4	FG-LAVA-40	OAS-LPK31
FPB-34SF31MTN-PK	MT	34" to 37"	FPB-34SFBSS31MT-N	FLEXFRAME-SS3	PAVER-CP-MT	PAVER-VENT-4	FG-LAVA-40 + FG-LAVA-10	OAS-LPK26



Square > Drop-In > Stainless Steel > Block Burner Kits

Model	Ignition	Fits	Burner System	Flexframe	Control Panel	Vent Kit	Media	LP Conv. Kit
FPB-20SBS16MTN-PK	MT	20" to 23"	FPB-20SBSMT-N	FLEXFRAME-SS	PAVER-CP-MT	PAVER-VENT-4	FG-LAVA-10 (x2)	OAS-LPK41



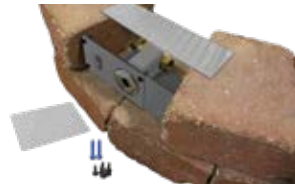
Linear > Flat > Stainless Steel > Block Burner Kits

Model	Ignition	Fits	Burner System	Flexframe	Control Panel	Vent Kit	Media	LP Conv. Kit
LOF-3014FHTPSIN-PK	TPSI	30" to 34" L, 14" to 18" W	LOF-3014FHTPSI-N	FLEXFRAME-SS	PAVER-CP-TPSI	PAVER-VENT-4	FG-LAVA-40	OAS-LPK35
LOF-3614FHTPSIN-PK	TPSI	36" to 40" L, 14" to 18" W	LOF-3614FHTPSI-N	FLEXFRAME-SS3	PAVER-CP-TPSI	PAVER-VENT-4	FG-LAVA-40 + FG-LAVA-10	OAS-LPK31
LOF-4814FHTPSIN-PK	TPSI	48" to 52" L, 14" to 18" W	LOF-4814FHTPSI-N	FLEXFRAME-SS3	PAVER-CP-TPSI	PAVER-VENT-4	FG-LAVA-40 + FG-LAVA-10 (x2)	OAS-LPK29
LOF-3014FHMTN-PK	MT	30" to 34" L, 14" to 18" W	LOF-3014FHMT-N	FLEXFRAME-SS	PAVER-CP-MT	PAVER-VENT-4	FG-LAVA-40	OAS-LPK35
LOF-3614FHMTN-PK	MT	36" to 40" L, 14" to 18" W	LOF-3614FHMT-N	FLEXFRAME-SS3	PAVER-CP-MT	PAVER-VENT-4	FG-LAVA-40 + FG-LAVA-10	OAS-LPK31
LOF-4814FHMTN-PK	MT	48" to 52" L, 14" to 18" W	LOF-4814FHMT-N	FLEXFRAME-SS3	PAVER-CP-MT	PAVER-VENT-4	FG-LAVA-40 + FG-LAVA-10 (x2)	OAS-LPK29
LOF-6016FHMTN-PK	MT	60" to 64" L, 16" to 20" W	LOF-6016FHMT-N	FLEXFRAME-SS3	PAVER-CP-MT	PAVER-VENT-4	FG-LAVA-40 + FG-LAVA-10 (x3)	OAS-LPK26

Control Panels

House the components of your burner system seamlessly within your SRW/Paver blocks.

Components of burner system are not included in the Control Panel Enclosure - they are located in the burner system or SRW/Paver Kit you purchased.

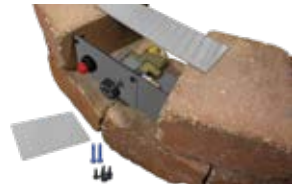


PAVER-CP-AWS

For use when building fire pit enclosures with SRW block and a AWS burner system.

INCLUDES >

SRW bracket kit and extender
Lintel - 12" L x 3" W
Screws and fittings
Tapcon® concrete anchors



PAVER-CP-TPSI

For use when building fire pit enclosures with SRW block and a TPSI burner system.

INCLUDES >

SRW bracket kit and extender
Lintel - 12" L x 3" W
Screws and fittings
Tapcon® concrete anchors

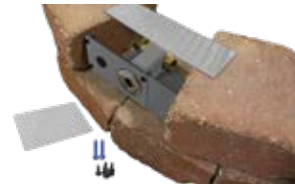


PAVER-CP-MT-MSI

For use when building fire pit enclosures with SRW block and a MT burner system.

INCLUDES >

SRW bracket kit and extender
Lintel - 12" L x 3" W
Battery operated piezo igniter
Ignition Hood
Screws and fittings
Tapcon® concrete anchors



PAVER-CP-MT

For use when building fire pit enclosures with SRW block and a MT burner system.

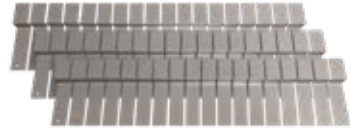
INCLUDES >

SRW bracket kit and extender
Lintel - 12" L x 3" W
Screws and fittings
Tapcon® concrete anchors

Flexframe



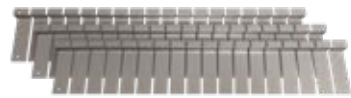
Allows you the flexibility to fill the gap between the fire pit structure and the pan. You can easily remove the burner without disturbing the structure. Flexible and easy to adapt for round, square, and rectangular fire pits.



FLEXFRAME-PRO3

Pro Series - Wider Version of the FLEXFRAME. Designed for Larger Round, Square and Linear Burner Systems - Constructed of 16 Gauge #304 Stainless Steel

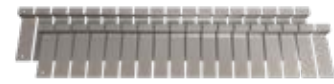
(3) 44" pieces per package



FLEXFRAME-SS3

Constructed of 16 Gauge #304 Stainless Steel. Engineered to protect against outdoor elements including salt water environments

(3) 44" pieces per package



FLEXFRAME-SS

Constructed of 16 Gauge #304 Stainless Steel. Engineered to protect against outdoor elements including salt water environments

(2) 44" pieces per package

Block Vent Kits



PAVER-VENT-4-LNTS

Stainless steel SRW vent kit with lintel. Each vent provides 18 square inches of ventilation.

INCLUDES >

Two (2) 3 5/8" H x 8" W vents with mounting plate, extension plate extends overall size up to 10" W

Two (2) Tapcon® concrete anchors and vent mounting hardware with spacers

Two (2) Lintels 12" L x 3" W (16 gauge galvanized steel)



PAVER-VENT-6-LNTS

Stainless steel SRW vent kit with lintel. Each vent provides 18 square inches of ventilation.

INCLUDES >

Two (2) 5 5/8" H x 8" W vents with mounting plate, extension plate extends overall size up to 10" W

Two (2) Tapcon® concrete anchors and vent mounting hardware with spacers

Two (2) Lintels 12" L x 3" W (16 gauge galvanized steel)

Spark Ignition



MSI-BSMTI

Manual spark ignition kit for FPB "MT" Match Throw Systems featuring the burning spur.

COMPATIBLE WITH



AWS IGNITION SYSTEM COMPONENTS



AWS Single Fire Feature Components

- Used for a single fire feature
- Can only be installed in fire features that are greater than 10 feet away from a pool or spa.
- All components can be housed underneath the burner.

Model	Description
FG-AWS30VDC-GOEK-N	Includes: 290K BTU Capacity 30VDC Valve System for Natural Gas, 30" Pilot Assembly, Heat Shield, Wire Leads, Hardware Bag, GOE-30VDC Power Supply, On/Off Weatherproof Rocker Switch and Stainless Steel Mounting Plate - 290K BTU NG (replaces part # FG-AWS30VDC-RCK)
FG-AWS30VDC-GOEK-P	Includes: 290K BTU Capacity 30VDC Valve System for Liquid Propane, 30" Pilot Assembly, Heat Shield, Wire Leads, Hardware Bag, GOE-30VDC Power Supply, On/Off Weatherproof Rocker Switch and Stainless Steel Mounting Plate - 290K BTU LP (replaces part # FG-AWS30VDC-RCK)
GOE-30VDC	30 Volt DC Power Supply for Single Fire Features - Non-Pool Certified

AWS Multiple Fire Feature Components



- One kit per fire feature. One power supply (sold separately) for every 4 fire features.
- Used when running 1 - 4 fire features. Also used when running a single or multiple fire features within 5 feet of a pool / spa.

Model	Description
FG-AWS30VDC-HC-K-N	NEW HIGHER BTU: 715K BTU Capacity 30VDC Valve System, High Capacity Natural Gas Valve System - 3/4" FIP Inlet, 3/4" FIP Outlet, 30" Pilot Assembly, Mounting Plate for High Capacity Key Valve (3/4" IPS straight Valve with Key) and On/Off Weatherproof Rocker Switch, Heat Shield, Mounting Hardware, Wire 10' AWS Power Wire to Valve, T300-9898-34 (5/8" OD, 1/2" ID Tranquiline Gas Flex Connector, 3/4" Stainless Steel Close Nipple, 5/8" Flare x 3/4" MIP Steel Adapter (Tapped 1/2 FIP), Power Supply and Orifice Not Included - 715K BTU NG
FG-AWS30VDC-HC-K-P	NEW HIGHER BTU: 715K BTU Capacity 30VDC Valve System, High Capacity Natural Gas Valve System - 3/4" FIP Inlet, 3/4" FIP Outlet, 30" Pilot Assembly, Mounting Plate for High Capacity Key Valve (3/4" IPS straight Valve with Key) and On/Off Weatherproof Rocker Switch, Heat Shield, Mounting Hardware, Wire 10' AWS Power Wire to Valve, T300-9898-34 (5/8" OD, 1/2" ID Tranquiline Gas Flex Connector, 3/4" Stainless Steel Close Nipple, 5/8" Flare x 3/4" MIP Steel Adapter (Tapped 1/2 FIP), Power Supply and Orifice Not Included - 715K BTU LP
FG-AWS30VDC-K-N	290K BTU Capacity 30VDC Valve System for Natural Gas - 1/2" FIP Inlet, 1/2" FIP Outlet, 30" Pilot Assembly, Mounting Plate for High Capacity Key Valve (3/4" IPS straight Valve with Key) and On/Off Weatherproof Rocker Switch, Heat Shield, Mounting Hardware, Wire 10' AWS Power Wire to Valve, T200-9898-46 (1/2" OD, 3/8" ID Tranquiline Gas Flex Connector, Stainless Steel Coupler, 1/2" Flare x 1/2" MIP Steel Adapter (Tapped 1/2 FIP), Power Supply and Orifice Not Included - 290K BTU NG
FG-AWS30VDC-K-P	290K BTU Capacity 30VDC Valve System for Liquid Propane - 1/2" FIP Inlet, 1/2" FIP Outlet, 30" Pilot Assembly, Mounting Plate for High Capacity Key Valve (3/4" IPS straight Valve with Key) and On/Off Weatherproof Rocker Switch, Heat Shield, Mounting Hardware, Wire 10' AWS Power Wire to Valve, T200-9898-46 (1/2" OD, 3/8" ID Tranquiline Gas Flex Connector, Stainless Steel Coupler, 1/2" Flare x 1/2" MIP Steel Adapter (Tapped 1/2 FIP), Power Supply and Orifice Not Included - 290K BTU LP
FG-AWS-PS-30V320	30VDC, 320W Power Supply - POOL CERTIFIED - built into NEMA Approved Enclosure - for use with single installation or up to four fire features, max distance run of 500' - Replaces FG-PS-30V320

AWS IGNITION Replacement Parts

 FG-AWS-PS-30V320 30VDC, 320W Power Supply	 GOE-30VDC 30 VDC power supply for single fire feature	 FG-PBA FG-AWS pilot burner assembly (30" long) - For NG	 FG-PBA-P FG-AWS pilot burner assembly (30" long) - For LP		
 FG-TIMER-2HR Two (2) hour mechanical timer.	 FG-1420-AOD 1420-A (On/Off/Remote) with 110 Receiver.	 FG-EMER-STOP Electronic emergency stop for 120VAC or 30 VDC.	 FG-FD2HW 120 min mechanical timer (no enclosure)	 FG-ICB AWS Ignition control box	 FG-HEATSHIELD AWS heat shield

MEDIA FOR YOUR FIRE FEATURE



STYLE Broken > Copper
MODEL GL-COPPER-10

LOG SETS STEEL & CONCRETE



TYPE Ironwood Steel Log Set (14)
MODEL L-IW-LG

ROCK MEDIA



Lava Rock MADE IN THE USA
Each rock is approximately 1" to 2" in diameter
FG-LAVA-10 10 lbs.
FG-LAVA-40 1 cubic foot (approx 30 - 40 lbs.)



Lava Stones
Each stone is approximately 1" to 2" in diameter
FG-LS50 50 lbs.

BROKEN GLASS >> approx 1/2" - 3/4" in size



Black
GL-BLACK-10



Copper
GL-COPPER-10



Crystal
GL-CRYSTAL-10



Dark Blue
GL-DARKBLUE-10



Light Blue
GL-LIGHTBLUE-10



Seabreeze
GL-SEABREEZE-10

REFLECTIVE GLASS >> approx 1/2" - 3/4" in size



Black
GRL-BLACK-10



Bronze
GRL-BRONZE-10



Cobalt
GRL-COBALT-10



Copper
GRL-COPPER-10



Silver
GRL-SILVER-10



BROKEN / NON-REFLECTIVE >> approx 1/2" - 3/4" in size



Black
GNRL-BLACK-10



Copper
GNRL-COPPER-10



Crystal
GNRL-CRYSTAL-10



Dark Blue
GNRL-DARKBLUE-10



Light Blue
GNRL-LIGHTBLUE-10



Ocean Blue
GNRL-OCEANBLUE-10

STEEL LOG SETS



Ironwood Steel (7)
L-IW-SM



Ironwood Steel (11)
L-IW-MED



Ironwood Steel (14)
L-IW-LG



Ironwood Steel (14)
L-IW-XL

CONCRETE LOG SETS



Sedona (19)
L-SEDONA

Spit Fire (17)
L-SF



STEEL TWIG SETS



Twig Set (4)
L-IW-TWIG810



Twig Set (5)
L-IW-TWIG1214

CONCRETE TWIG SETS



Birch (5)
L-BR-3048



Driftwood (5)
L-DW-3048



Driftwood (6)
L-DW-6084

ACCESSORIES FOR FIREGEAR PRODUCTS

GLASS WINDSHIELDS

Round



Model	Dimensions
GWS-23R	23" Diameter x 8" H
GWS-32R	32" Diameter x 8" H
GWS-36R	36" Diameter x 8" H
GWS-38R	38" Diameter x 8" H
GWS-48R	48" Diameter x 8" H

Square



Model	Dimensions
GWS-2424	24" W x 6" H
GWS-3030	30" W x 6" H
GWS-3838	38" W x 6" H
GWS-4242	42" W x 6" H

Linear



Model	Dimensions	Model	Dimensions
GWS-2911	29 1/2" L x 11 1/2" W x 6" H	GWS-5311	53 1/2" L x 11 1/2" W x 6" H
GWS-2917	29 1/2" L x 17" W x 6" H	GWS-5319	53" L x 19" W x 6" H
GWS-3511	35 1/2" L x 11 1/2" W x 6" H	GWS-6511	65 1/2" L x 11 1/2" W x 6" H
GWS-3517	35 1/2" L x 17" W x 6" H	GWS-6521	65" L x 21" W x 6" H
GWS-4111	41 1/2" L x 11 1/2" W x 6" H	GWS-7711	77 1/2" L x 11 1/2" W x 6" H
GWS-4119	41" L x 19" W x 6" H	GWS-7721	77" L x 21" W x 6" H

STAINLESS STEEL LIDS



Round



Model	Dimensions	Fits Models
LID-19R2	22" Diameter x 2.5" H	FPB-19R Series
LID-25R2	28" Diameter x 2.5" H	FPB-25R Series
LID-29R2	32" Diameter x 2.5" H	FPB-29R Series
LID-33R2	36" Diameter x 2.5" H	FPB-33R Series

Square



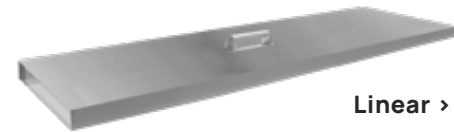
Model	Dimensions	Fits Models
LID-20S	22" W x 11 1/2" H	FPB-20S Series
LID-26S	28" W x 11 1/2" H	FPB-26S Series
LID-32S	32" W x 11 1/2" H	FPB-32S Series
LID-38S	38" W x 11 1/2" H	FPB-38S Series

Linear > T



Model	Dimensions	Fits Models
LID-LOF2406	26 3/4" L x 8 3/4" W x 2 7/8" H	LOF-2406
LID-LOF3006	32 3/4" L x 8 3/4" W x 2 7/8" H	LOF-3006
LID-LOF3606	38 3/4" L x 8 3/4" W x 2 7/8" H	LOF-3606
LID-LOF4806	50 3/4" L x 8 3/4" W x 2 7/8" H	LOF-4806
LID-LOF6006	62 3/4" L x 8 3/4" W x 2 7/8" H	LOF-6006
LID-LOF7206	72 3/4" L x 8 3/4" W x 2 7/8" H	LOF-7206
LID-LOF8406	86 3/4" L x 8 3/4" W x 2 7/8" H	LOF-8406
LID-LOF9606	98 3/4" L x 8 3/4" W x 2 7/8" H	LOF-9606

Linear > H



Model	Dimensions	Fits Models
LID-LOF2412	26 3/4" L x 14 3/4" W x 2 7/8" H	LOF-2412
LID-LOF3010	32 3/4" L x 12 3/4" W x 2 7/8" H	LOF-30LH
LID-LOF3012	32 3/4" L x 14 3/4" W x 2 7/8" H	LOF-3012
LID-LOF3614	38 3/4" L x 16 3/4" W x 2 7/8" H	LOF-3614
LID-LOF4214	44 3/4" L x 16 3/4" W x 2 7/8" H	LOF-4214
LID-LOF4814	50 3/4" L x 16 3/4" W x 2 7/8" H	LOF-4814
LID-LOF6016	62 3/4" L x 18 3/4" W x 2 7/8" H	LOF-6016
LID-LOF7216	72 3/4" L x 18 3/4" W x 2 7/8" H	LOF-7216
LID-LOF8416	86 3/4" L x 18 3/4" W x 2 7/8" H	LOF-8416
LID-LOF9616	98 3/4" L x 18 3/4" W x 2 7/8" H	LOF-9616

ACCESSORIES FOR FIREGEAR PRODUCTS

PROPANE ACCESSORIES



FG-12QDK
Quick Disconnect Kit for use with Natural Gas or Liquid Propane - 12" (144"), 3/8" I.D.



FG-32LPHRK
32" Liquid Propane Hose and Regulator Kit. Rated at 85,375 BTU @10" W.C. CSA-AGA/CGA Approved.



FG-60LPHRK
60" Liquid Propane Hose and Regulator Kit. Rated at 130K BTU @10" W.C. CSA-AGA/CGA Approved.



FG-LPQDK
LP quick disconnect kit - includes 12' (144") 1/2" OD, 3/8" ID, gray PVC hose with quick disconnect fitting.



FG-LPRK
100K BTU Liquid Propane Regulator, 3/8" MPT Adapter and Acme Quick Connect. CSA-AGA/CGA approved.

GAS VALVE ACCESSORIES



KEY-PC-12 | KEY-PC-24
12" or 24" polished chrome key for key valve



KV-PC-12
High capacity straight key valve with polished chrome key cover and 12" key (350,000 BTU @ 1/2 PSI)



BVL2S
High Capacity 1/2" Ball Valve



BVL3S
High Capacity 3/4" Ball Valve



VENT-KIT-6X12SS
Includes 2 stainless steel 6" tall x 12" wide vents. Each vent provides 18 square inches of cross ventilation.

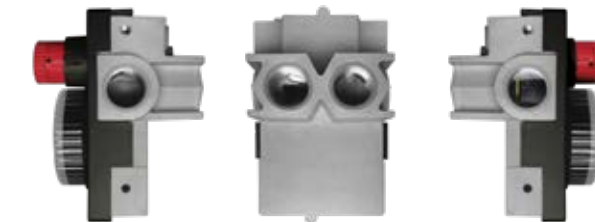
ESTOP TIMER



ESTOP3-0H >>

Unique all mechanical gas shut-off timer with built-in emergency stop - no power required
High Btu capacity
Safest gas timer available in the industry
Available in 1-Hour & 3-Hour (**NEW**) models
Innovative multi-port design provides installation flexibility

1/2" NPT inlets and outlets (side and back)
Six (6) mounting holes (front and side) for secure installation
Natural gas (NG) or Liquid Propane (LP) - no conversion necessary
Dial has UV Protection



ESTOP-CP-KIT
Control panel designed to house the ESTOP timer.



ESTOP-LC-KIT
Locking Cabinet designed to house the ESTOP timer (Removable Lock)



ESTOP-RM-KIT
Surface mount enclosure designed to house the ESTOP timer.

HOW MUCH MEDIA?

KALEA BAY

Model	Glass Only
36" Kalea Bay	15 lbs
48" Kalea Bay	20 lbs
60" Kalea Bay	25 lbs
72" Kalea Bay	25 lbs

SANCTUARY 1 & 76

Model	Glass Only	Lava Rock Only	Lava Stones Only
Sanct 1	30 lbs	20 lbs	35 lbs
Sanct 76	40 lbs	30 lbs	45 lbs

SANCTUARY 2 & 3

Model	Glass Only	Lava Rock Only	Lava Stones Only
Sanct 2	120 lbs	30 lbs	30 lbs
Sanct 3	70 lbs	15 lbs	20 lbs

ROUND FIRE PITS

ID of Fire Pit	Lava Rock Only	Lava Rock as a Base	Glass on top of Lava Rock	Lava Stones on top of Lava Rock	Glass Only
16"	10 lbs	5 lbs	10 lbs	10 lbs	30 lbs
19"	10 lbs	10 lbs	20 lbs	15 lbs	40 lbs
25"	15 lbs	15 lbs	30 lbs	20 lbs	70 lbs
29"	20 lbs	20 lbs	40 lbs	25 lbs	90 lbs
33"	25 lbs	25 lbs	50 lbs	30 lbs	110 lbs
34"	30 lbs	25 lbs	60 lbs	30 lbs	120 lbs
44"	45 lbs	35 lbs	70 lbs	50 lbs	200 lbs

SQUARE FIRE PITS

ID of Fire Pit	Lava Rock Only	Lava Rock as a Base	Glass on top of Lava Rock	Lava Stones on top of Lava Rock	Glass Only
20"	10 lbs	10 lbs	20 lbs	15 lbs	50 lbs
26"	15 lbs	15 lbs	30 lbs	20 lbs	90 lbs
32"	25 lbs	25 lbs	50 lbs	30 lbs	130 lbs
38"	30 lbs	30 lbs	60 lbs	35 lbs	190 lbs

STAINLESS STEEL > H DROP-IN

Pan Size	Lava Rock	Glass	Lava Stones
24 x 12	20 lbs	40 lbs	20 lbs
30 x 12	20 lbs	50 lbs	20 lbs
36 x 14	30 lbs	70 lbs	30 lbs
48 x 14	40 lbs	90 lbs	40 lbs
60 x 16	50 lbs	130 lbs	50 lbs
72 x 16	60 lbs	150 lbs	60 lbs
84 x 16	70 lbs	180 lbs	70 lbs
96 x 16	80 lbs	200 lbs	80 lbs

STAINLESS STEEL > H FLAT

Pan Size	Lava Rock	Glass	Lava Stones
24 x 14	20 lbs	50 lbs	20 lbs
30 x 14	20 lbs	60 lbs	20 lbs
36 x 14	30 lbs	70 lbs	30 lbs
48 x 14	40 lbs	90 lbs	40 lbs
60 x 16	50 lbs	130 lbs	50 lbs
42 x 16	60 lbs	150 lbs	60 lbs
84 x 16	70 lbs	180 lbs	70 lbs
96 x 16	80 lbs	200 lbs	80 lbs

PRO SERIES > H FLAT

Pan Size	Lava Rock	Glass	Lava Stones
30 x 10	20 lbs	40 lbs	20 lbs
36 x 10	20 lbs	50 lbs	20 lbs
48 x 10	30 lbs	60 lbs	30 lbs
60 x 10	40 lbs	80 lbs	40 lbs
72 x 10	50 lbs	100 lbs	50 lbs
96 x 10	60 lbs	130 lbs	60 lbs

STAINLESS STEEL > T DROP-IN

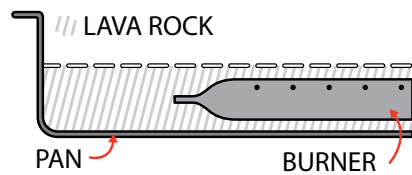
Pan Size	Lava Rock	Glass	Lava Stones
24 x 6	10 lbs	20 lbs	10 lbs
30 x 6	10 lbs	30 lbs	10 lbs
36 x 6	10 lbs	30 lbs	10 lbs
48 x 6	20 lbs	40 lbs	20 lbs
60 x 6	20 lbs	50 lbs	20 lbs
72 x 6	20 lbs	60 lbs	20 lbs
84 x 6	30 lbs	70 lbs	30 lbs
96 x 6	30 lbs	80 lbs	30 lbs

STAINLESS STEEL > T FLAT

Pan Size	Lava Rock	Glass	Lava Stones
24 x 8	10 lbs	30 lbs	10 lbs
30 x 8	20 lbs	30 lbs	20 lbs
36 x 8	20 lbs	40 lbs	20 lbs
48 x 8	20 lbs	50 lbs	20 lbs
60 x 8	30 lbs	60 lbs	30 lbs
72 x 8	30 lbs	80 lbs	30 lbs
84 x 8	40 lbs	90 lbs	40 lbs
96 x 8	40 lbs	100 lbs	40 lbs

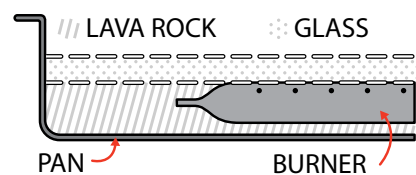
Lava Rock ONLY

When using lava rock, use enough to cover entire burner. Do not over-fill. Just use enough to hide the burner from view.



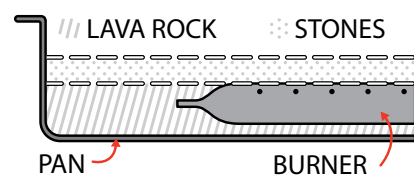
Lava Rock UNDER Glass

Fill the pan with lava rock until it is level with the top of the burner. Then take your glass and lay it on top of the lava rock and burner. You should add just enough glass to cover the burner.



Lava Rock UNDER Stones

Fill the pan with lava rock until it is level with the top of the burner. Then take your lava stones and lay it on top of the lava rock and burner. Add enough stones to cover the burner.



GAS PIPE SIZING CHART

NATURAL GAS (NG)

Pipe Length (ft.)	1/2"	3/4"	1"	1 - 1 1/4"	1 - 1 1/2"	2"	2 - 2 1/2"	3"	4"
10	108	230	387	793	1237	2259	3640	6434	-
20	75	160	280	569	877	1610	2613	5236	9521
30	61	129	224	471	719	1335	2165	4107	7859
40	52	110	196	401	635	1143	1867	3258	6795
50	46	98	177	364	560	1041	1680	2936	6142
60	42	89	159	336	513	957	1559	2684	5647
70	38	82	149	317	476	896	1447	2492	5250
80	36	76	140	239	443	840	1353	2315	4900
90	33	71	133	275	420	793	1288	2203	4667
100	32	68	126	266	411	775	1246	2128	4518
125	28	60	117	243	369	700	1143	1904	4065
150	25	54	105	215	327	625	1008	1689	3645
175	23	50	93	196	303	583	993	1554	3370
200	22	47	84	182	280	541	877	1437	3160
300	17	37	70	145	224	439	686	1139	2539

Pipe length must include additional length for all fittings. Add approximately 5 feet of pipe per fitting.

Natural Gas (NG) flow is given in thousands of BTU/hr. One cubic foot of NG gas - 1000 BTU.

Nominal pressure at the burner for Natural Gas is 3.5" of water column. (Typical machine supply 5" - 7").

Natural Gas Example: A machine with a burner that requires 440,000 BTU would need a 1 - 1/4" pipe for a 20' long run.

LIQUID PROPANE (LP)

Pipe Length (ft.)	1/2"	3/4"	1"	1 - 1 1/4"	1 - 1 1/2"	2"	2 - 2 1/2"	3"	4"
10	275	567	1071	2205	3307	6221	10140	17990	35710
20	189	393	732	1496	2299	4331	7046	12510	25520
30	152	315	590	1212	1858	3465	5695	10110	20620
40	129	267	504	1039	1559	2992	4778	8481	17300
50	114	237	448	913	1417	2646	4343	7708	15730
60	103	217	409	834	1275	2394	3908	6936	14150
70	89	185	346	724	1086	2047	3329	5908	12050
80	78	162	307	630	976	1811	2991	5309	10830
90	69	146	275	567	866	1606	2654	4711	9613
100	63	132	252	511	787	1496	2412	4281	8736
125	54	112	209	439	665	1282	2083	3618	7382
150	48	100	185	390	590	1138	1808	3210	6549
175	43	90	168	353	534	1030	1637	2905	5927
200	40	83	155	325	491	947	1505	2671	5450
300	37	77	144	303	458	887	1404	2492	5084

Pipe length must include additional length for all fittings. Add approximately 5 feet of pipe per fitting.

Liquid Propane (LP) flow is given in thousands of BTU/hr. One cubic foot of NG gas - 2516 BTU.

This chart refers to low pressure LP after regulation, standard nominal pressure at the burner for Liquid Propane Gas is 11" of water column.

Liquid Propane Example: A machine with a burner that requires 440,000 BTU would need a 1" pipe for a 20' long run.

HIGH ELEVATION INSTALLATION

This appliance is listed for elevations from 0 - 4500ft in Canada and the United States. If elevation exceeds 4500ft it may be necessary to decrease the input rating by changing the existing burner orifice to a smaller size. Input should be reduced 4% for each 1000ft beyond the 4500ft above sea level.

Check with your local utility for assistance in determining the proper orifice in your location. In some cases the heating value may already be reduced and downsizing the orifice may not be necessary.

NOTE: The sizing charts above list the specific pipe sizes required for the amount of BTU's for a new gas line installations. If you are using an existing gas line you must take into consideration the existing gas line capacities to ensure you will have proper pressure.

This chart is for reference only, we recommend you consult with a Licensed Plumber/Gas Fitter or NFPA54 (National Fuel Gas Code - current edition) for more details.

Firegear Outdoors hereby warrants to the end user that products will be free from material and workmanship defects that prevent safe and correct operation of the product. The warranty commences from date of sale to the end user for the following period:

ALL WARRANTIES WITHIN THIS DOCUMENT ONLY APPLY TO PRODUCTS MANUFACTURED AFTER | 01 / 01 / 2026

BURNER SYSTEMS BURNERS COMPONENTS ACCESSORIES TYPE OF PRODUCT	CONSUMER APPLICATIONS	COMMERCIAL APPLICATIONS
Construction and Manufacturer Defects	Lifetime Warranty	2 Year Warranty
Stainless Steel Burners and Pans	Lifetime Warranty	2 Year Warranty
Pro Series Burners	Lifetime Warranty	2 Year Warranty
Gas Valve, Spark Igniter, and Pilot Assemblies	5 Year Warranty	2 Year Warranty
AWS Electronic Ignition Systems (12 VAC, 24 VAC, 30 VAC)	3 Year Warranty	1 Year Warranty
TPSI Electronic Components	5 Year Warranty	2 Year Warranty
MT Components (Key Valve)	5 Year Warranty	2 Year Warranty
Refractory Gas Log Sets	5 Year Warranty	2 Year Warranty
Skytech Manufactured Optional Controls	2 Year Warranty	1 Year Warranty

OUTDOOR FIREPLACE KALEA BAY TYPE OF PRODUCT	CONSUMER APPLICATIONS	COMMERCIAL APPLICATIONS
Construction and Manufacturer Defects	Lifetime Warranty	Lifetime Warranty
Stainless Steel Components	Lifetime Warranty	Lifetime Warranty
Gas Valve, pilot Assembly, Power Supply, and Controls	5 Year Warranty	2 Year Warranty
Skytech Manufactured Optional Controls	5 Year Warranty	2 Year Warranty

SANCTUARY SERES - GFRC FIRE FEATURES TYPE OF PRODUCT	CONSUMER APPLICATIONS	COMMERCIAL APPLICATIONS
GFRC Structure <small>* The warranty covers manufacturing defects or structural failure. Small stress cracks and surface crazing are a natural occurrence in GFRC products and are not covered within this warranty. Discoloration over time is a natural process and is not covered by this warranty</small>	* 3 Year Warranty	* 3 Year Warranty
Burner System <small>** Please refer to your burner system warranty for more information about your warranty.</small>	** Refer to Burner System	** Refer to Burner System

ACCESSORIES TYPE OF PRODUCT	CONSUMER APPLICATIONS	COMMERCIAL APPLICATIONS
Construction and Manufacturer Defects	Lifetime Warranty	Lifetime Warranty
Stainless Steel Components (Lids, Stainless Steel Covers)	Lifetime Warranty	Lifetime Warranty
ESTOP1-0H, Windshields, Hoses & Regulators	1 Year Warranty	1 Year Warranty

For additional details, please refer to the products installation manual

The end-user must provide a bill of sale, canceled check, or payment record to verify the purchase date and to establish the warranty period. This Limited Warranty shall be valid and limited to the original purchaser only.

WARNING: Any modification to the product will void the warranty.

This Limited Warranty shall be limited to the repair and/or replacement of parts that have been proven to be defective under normal use and service. All warranty claims must be made by the Distributor/Dealer account on behalf of the end-user. You may contact Technical Support at 800-966-8126.

Our Technical Service Department must confirm all approved defects. If a defect is confirmed and we approve the claim, we will replace such parts without charge. This warranty gives you specific legal rights, and you may also have other rights, which vary from state to state.

The manufacturer may request defective products returned with an RMA (Return Merchandise Authorization) issued by Firegear Outdoors for specific products, which is considered to be the nature of the defect and or warranty claim. Product to be returned should; be packed so as not to incur damages during transportation. Firegear Outdoors is not responsible for damages on returned items. RMA is valid for thirty (30) days from the date issued. The RMA must be clearly marked on the outside of the package.

Please check with your local building code department or governing agency for proper approvals before purchasing. Firegear Outdoors is not responsible for any violation of local codes.

Travel, diagnostic cost, service labor to repair the defect on warranty parts to and from the factory will be the responsibility of the owner. We will not be responsible for labor charges and/or damage incurred in installation, repair, and replacement. Firegear Outdoors is not responsible for issues related to gas or electrical installation.

The Limited Warranty is voided if not assembled, installed, and operated as intended. This Limited Warranty does not cover any defects due to accident, abuse, misuse, alteration, misapplication, vandalism, improper installation or improper maintenance or service, removal from the original location, or re-installation into another location, or failure to perform normal and routine maintenance.

Damage due to severe weather conditions such as hail, hurricanes, earthquakes, tornadoes, discoloration due to overheating, exposure to chemicals (including chlorine and salt), either directly or in the atmosphere, or very high humidity, is not covered by this Limited Warranty. Coastal, humid and/or salt environments are subject to manufacturer review. All out-of-box claims must be made within 30 days of purchase and must be made prior to installation. Any product installed damaged will be considered damaged during installation and not covered under warranty.

There are no other express warranties except as set forth herein. For consumer applications, any applicable implied warranties of merchantability and fitness are limited in duration to the period of coverage of this Limited Warranty. Some states do not allow limitation on how long an implied warranty lasts, so this limitation may not apply to you.

For Commercial Applications, the liability of Firegear Outdoors is limited to the express terms of this warranty. We expressly disclaim any and all implied warranties, including any warranties of fitness for a particular purpose or merchantability.

We are not liable for any special, indirect or consequential damages. Our maximum liability is limited to the purchase price of the purchased units. Some states do not allow the exclusion or limitation of incidental or consequential damages, so this limitation or exclusion may not apply to you.

We do not authorize any person or company to assume for it any other obligation or liability in connection with the sale, installation, use, removal, return, or replacement of its equipment, and or such representation are binding.



Firegear Outdoors
1600 Riverfork Dr. East
Huntington, IN 46750

www.firegearoutdoors.com

THE BEST ROOM IN THE HOUSE
ISN'T IN THE HOUSE AT ALL



FIREGEAR[®]

firegearoutdoors.com

info@firegearoutdoors.com | 260.355.5577

1600 Riverfork Dr. East | Huntington | Indiana, 46750-8427

POP-FG-CATALOG-2026 ver. 021026

earthcore[®]

We make fire...better.