



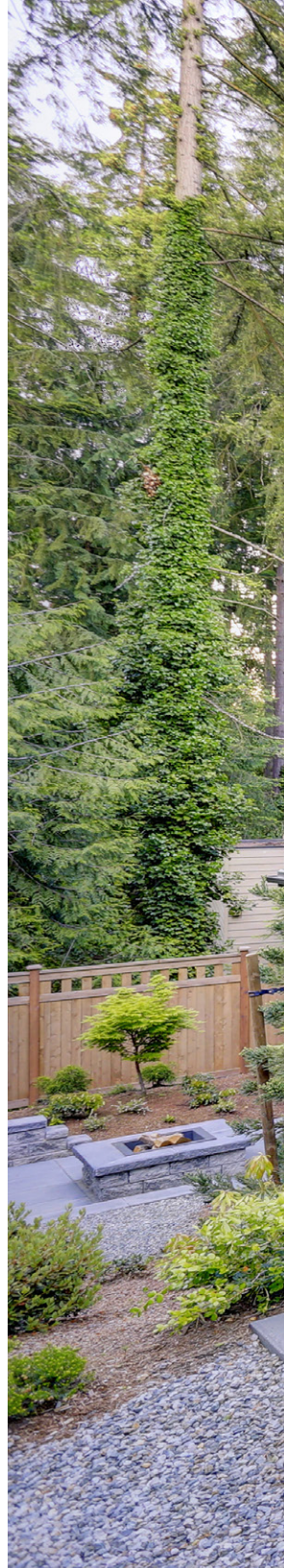
**ALL NEW.
BOLDLY
REFINED.**

T & L Series Grills



The American Original. Reimagined.

American Outdoor Grill enters a new era with a bold look, a redefined product line, and the same unwavering commitment to American craftsmanship that is backed by more than 8 decades of legacy. Our grills are engineered for reliability, designed with unmistakable presence, and built to deliver strength you can trust. Backed by an industry-leading warranty and superior customer service, this evolution stands as a testament to who we are: a brand crafted for excellence, rooted in authenticity, and built to connect families and communities around food and fire.





GRILL FEATURES | L/T Series



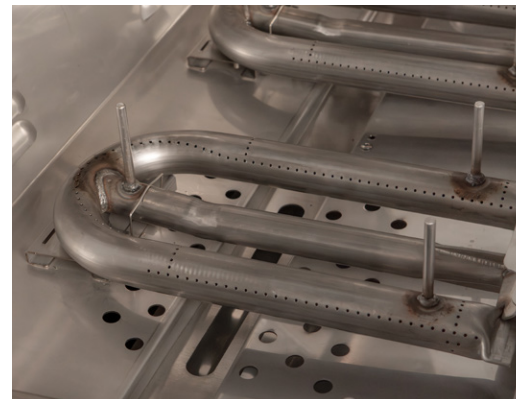
Large Analog Thermometer

Features a die cast alloy bezel with a Gun Metal finish for durability.



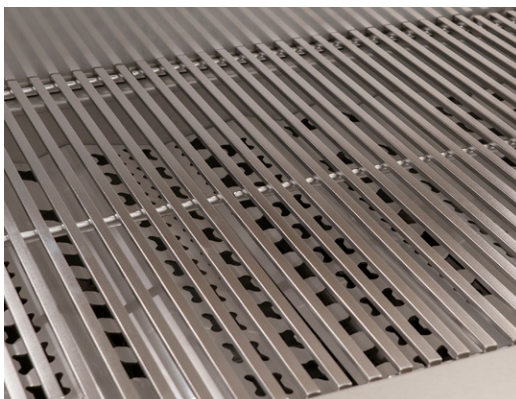
Spring-Assisted Hood

Features a rugged design with hidden spring-assist for ease of opening.



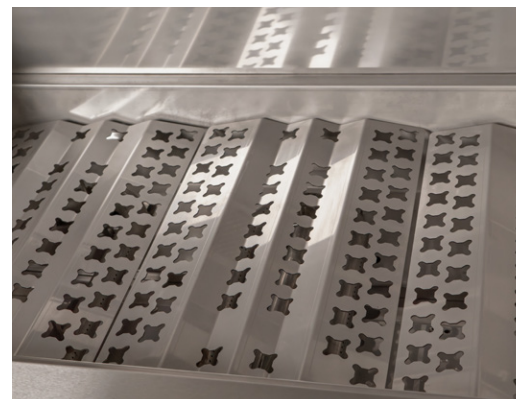
304 Stainless Steel Tubular Burners

Provide even heat and durability.



Diamond Sear Cooking Grids™

304 stainless steel provides ease of use and even heat distribution.



Redesigned Vaporizer Panels

Ensure even heat distribution and minimize flare ups.



L Featured on L-Series **T** Featured on T-Series



Heavy Duty Warming Rack

For additional warming space and indirect cooking.

L **T**



Interior Halogen Lights

For grilling well into the evening.

L



Accessible Knobs

Surrounded by die cast alloy bezels with Gun Metal finish.

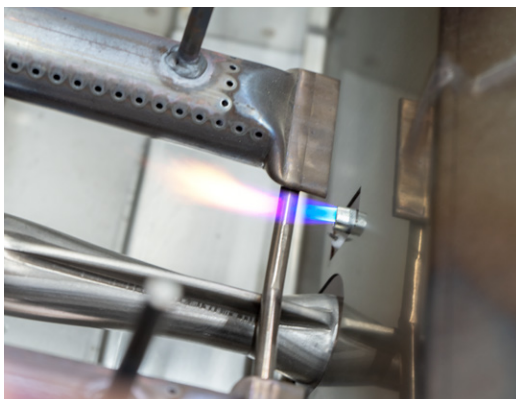
L **T**



Multi-Color Light Bar

With remote control to change colors to your liking. Convenient built-in pocket in drip tray to tuck away the remote control when not in use.

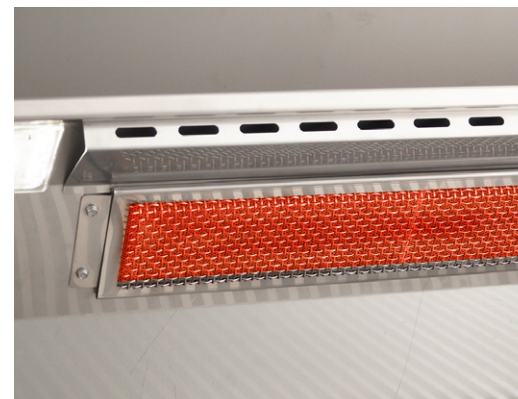
L



Flame Thrower Ignition

Turn-to-light piezo ignition offers easy and consistent lighting.

L **T**



Infrared Backburner

With rotisserie kit that includes spit rod, forks and motor.

L

L-SERIES GAS GRILLS

The L-Series grills make a bold statement with an external, multi-color LED light bar, interior halogen lights and striking Gun Metal finish throughout. The Flame Thrower ignition systems provides easy and consistent lighting. Designed to stand out after sunset, the L-Series brings elevated control and confidence to every cook. Requires 120 Volt AC power.



Feature Highlights

- Interior Halogen Lights
- External, Multi-Color LED Light Bar with Remote Control for Operation
- Remote Control & Pocket Holder in Drip Tray
- Infrared Backburner
- Rotisserie Kit (includes spit rod, forks and motor)
- LED Master Power Button
- Diamond Sear™ 304 Stainless Steel Cooking Grids
- Heavy Duty 304 SS Tubular Burners
- Flame Thrower Ignition System
- Heavy Duty Warming Rack
- Vaporizer Panels for Precise Heating Performance
- Spring-Assisted Hood
- Large Easy-to-Read Analog Thermometer with Die Cast Alloy Bezel in Gun Metal Finish
- Commercial Caliber Handle with Die Cast Alloy End Caps in Gun Metal Finish
- Accessible Control Knobs with Die Cast Alloy Bezels in Gun Metal Finish



AOG36LN(P)*

36" L-Series Built-In Grill

- Primary cooking surface: 648 sq. inches
- BTU's: 50,000 Primary + 12,000 Backburner
- Cut-out: 36¾" w x 19½" d x 8½" h
- Counter overhang cut-out: 40¾" w

Control Panel Options



Standard Stainless Steel



AOG30LN(P)*

30" L-Series Built-In Grill

- Primary cooking surface: 540 sq. inches
- BTU's: 45,000 Primary + 12,000 Backburner
- Cut-out: 30½" w x 19½" d x 8½" h
- Counter overhang cut-out: 34½" w



AOG24LN(P)*

24" L-Series Built-In Grill

- Primary cooking surface: 432 sq. inches
- BTU's: 32,000 Primary + 10,000 Backburner
- Cut-out: 24½" w x 19½" d x 8½" h
- Counter overhang cut-out: 28½" w



AO-36/30/24L-BLK
Accent Black Panel**



AO-36/30/24L-WHT
Accent White Panel**

* All grills include a gas conversion kit.

** See page 12 for Accent Color Panel accessory.

T-SERIES GAS GRILLS

The T-Series grills feature a Flame Thrower piezo ignition system that eliminates the need for electricity or batteries. Self-sufficient by design, they deliver dependable performance in any setting.



Feature Highlights

- Diamond Sear™ 304 Stainless Steel Cooking Grids
- Heavy Duty 304 SS Tubular Burners
- Flame Thrower Ignition System
- Heavy Duty Warming Rack
- Vaporizer Panels for Precise Heating Performance
- Spring-Assisted Hood
- Large Easy-to-Read Analog Thermometer with Die Cast Alloy Bezel in Gun Metal Finish
- Commercial Caliber Handle with Die Cast Alloy End Caps in Gun Metal Finish
- Accessible Control Knobs with Die Cast Alloy Bezels in Gun Metal Finish



AOG36TN(P)*

36" T-Series Built-In Grill

- Primary cooking surface: 648 sq. inches
- BTU's: 50,000 Primary
- Cut-out: 36¾" w x 19½" d x 8½" h
- Counter overhang cut-out: 40¾" w

Control Panel Options



Standard Stainless Steel



AOG30TN(P)*

30" T-Series Built-In Grill

- Primary cooking surface: 540 sq. inches
- BTU's: 45,000 Primary
- Cut-out: 30½" w x 19½" d x 8½" h
- Counter overhang cut-out: 34½" w



AOG24TN(P)*

24" T-Series Built-In Grill

- Primary cooking surface: 432 sq. inches
- BTU's: 32,000 Primary
- Cut-out: 24½" w x 19½" d x 8½" h
- Counter overhang cut-out: 28½" w



AO-36/30/24T-BLK
Accent Black Panel**



AO-36/30/24T-WHT
Accent White Panel**

* All grills include a gas conversion kit.

** See page 12 for Accent Color Panel accessory.

PORTABLE CART BASES

The **Portable Cart Bases** convert AOG 36", 30" and 24" gas built-in grills to portable units. They are compatible with both L-Series and T-Series grills.

Feature Highlights

- Access doors for storage
- Fold-down twin side shelves
- Tank ring holder included
- Optional Accent Black or White Door Panels available
- Gas connection hoses sold separately: For LP, use #5110-07 // For NG, use #5110-03 (10' hose w/ quick disconnect)
- Optional protective vinyl covers are available for all iterations



24CRT-25

24" Portable Cart Base

- Shown with 24" L-Series built-in grill (sold separately)
- See page 12 for Accent Color Panel accessory



30CRT-25 + CRT-30L-BLK

30" Portable Cart Base

- Shown with 30" T-Series built-in grill and Accent Black Panels (grill and panels sold separately)
- See page 12 for Accent Color Panel accessory



36CRT-25

36" Portable Cart Base

- Shown with 36" L-Series built-in grill (sold separately)
- See page 12 for Accent Color Panel accessory

PATIO AND IN-GROUND POST BASES

The **Patio and In-Ground Post Bases** convert 24" gas built-in grills to post units. They are compatible with both L-Series and T-Series grills.

Feature Highlights

- Rigid side shelves
- 1-hour timer installed on the post
- Gas connection hoses sold separately: For LP, use #5110-07 // For NG, use #5110-03 (10' hose w/ quick disconnect)
- Optional protective vinyl covers are available for all iterations



TH-PP-2
Tank Shield for
Patio Post Grill

AOG24-PP

24" Patio Post Base (37" Shelf Height)

- Shown with 24" L-Series built-in grill (sold separately)



AOG24-GP

24" In-Ground Post Base (37" Shelf Height)

- Shown with 24" T-Series built-in grill (sold separately)



AOG24-GA

24" Accessible In-Ground Post Base (32" Shelf Height)

- Shown with 24" L-Series built-in grill (sold separately)



AOG24-PA

24" Accessible Patio Post Base (32" Shelf Height)

- Shown with 24" T-Series built-in grill (sold separately)

PREMIUM ACCESSORIES



The Double Side Burner puts precise flame control at your command – ideal for preparing side dishes and sauces alongside your main meal. Available in L Series or T Series to seamlessly match your grill. Features two powerful 12,500 BTU burners, a durable stainless steel rod cooking grid and a sleek stainless steel cover.



AOG2SBL(P)

L-Series Built-In Double Side Burner

- Cut-out: 11½" w x 22¾" d x 8½" h
- Burner Btu's: 12,500 (x 2)
- Counter overhang cut-out: 16¾" w
- Optional Accent Black or White Panels available



AOG2SBT(P)

T-Series Built-In Double Side Burner

- Cut-out: 11½" w x 22¾" d x 8½" h
- Burner Btu's: 12,500 (x 2)
- Counter overhang cut-out: 16¾" w
- Optional Accent Black or White Panels available



Accent Color Panels

Add a touch of flair to any L-Series or T-Series grill and Double Side Burner with the Accent Color Panels.



Accent Black Panel

- AO-36/30/24L-BLK - L-Series Built-In Grills
- AO-36/30/24T-BLK - T-Series Built-In Grills
- CRT-36/30/24L(R)-BLK - Cart Doors
- AO-2SB-BLK - L-Series & T-Series Dbl Side Burner



Accent White Panel

- AO-36/30/24L-WHT - L-Series Built-In Grills
- AO-36/30/24T-WHT - T-Series Built-In Grills
- CRT-36/30/24L(R)-WHT - Cart Doors
- AO-2SB-WHT - L-Series & T-Series Dbl Side Burner



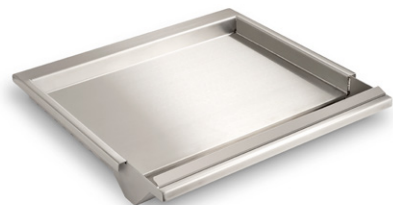
VHD-36
36" Vent Hood

- Dimensions: 36" w x 18" h x 30" d
- 1000 CFM dual fan (may be configured either vertically or horizontally)
- Interior halogen lamps



24-IL-C, 30-IL-C, 36-IL-C
Insulating Liners

The Insulating Liner facilitates installation of built-in AOG grills into wood, composite or other combustible enclosures when used with non-combustible counter tops.



GR18A
Stainless Steel Griddle

- Dimensions: 18½" w x 17½" d



5521-11T
Stainless Steel Gas Timer Box

- Includes a 1-hour timer



REF-21
AOG Refrigerator

- Cut-out: 20" w x 21¾" d x 34¼" h
- Incl. lock & reversible door hinge



Vinyl Protective Covers

Protect your investment with a heavy duty AOG Vinyl Cover. Available for built-in and portable grills



TK-1
4-Pc. Tool Kit in Nylon Case

- Includes: tongs, basting brush, spatula, and meat fork



3092C
Automatic Timer Gas Shut-off

- Features a 1-hour timer



IP30L-SMD-77BA
30" Island Bundle

- Dimensions: 77" w x 36" d x 51" h
- Includes:
 - AOG20AR Horizontal Access Door
 - AOG15DD Double Drawer
 - AOG14TR Door w/ Tank Tray
 - 5521-11T 1-Hr. Timer Box
- Island base available in 7 GFRC finishes (shown below)
- Compatible with both L-Series & T-Series grills and side burners (sold separately)



DOORS AND DRAWERS



AOG20AR(L)
14" x 20" Horizontal Access Door
 • Cut-out: 15" h x 20½" w



AOG24AR(L)
17" x 24" Horizontal Access Door
 • Cut-out: 18" h x 24½" w



AOG14AR(L)
20" x 14" Vertical Access Door
 • Cut-out: 21" h x 14½" w



AOG14TR(L)
Door w/ Tank Tray & Louvers
 • Cut-out: 21" h x 14½" w x 20½" d



AOG17AR(L)
24" x 17" Vertical Access Door
 • Cut-out: 25" h x 17½" w



AOG30DA
20" x 30" Double Access Doors
 • Cut-out: 21" h x 30" w



AOG39DA
16" x 39" Double Access Doors
 • Cut-out: 16" h x 39" w



AOG15DD
Double Drawer
 • Cut-out: 16" h x 14½" w x 20½" d



AOG30UD
30" Utility Drawer
 • Cut-out: 13" h x 31" w x 20½" d



AOG30ADD
Door w/ Double Drawer
 • Cut-out: 18½" h x 30" w x 26" d



AOG36ADP
Door w/ Double Drawer & Platter Storage
 • Cut-out: 18½" h x 36½" w x 26" d



20-30-SD
20" x 30" Double Access Doors
 • Cut-out: 20½" h x 30" w



17-24-SD
17" x 24" Horizontal Access Door
 • Cut-out: 17½" h x 24½" w



14-20-SD
14" x 20" Horizontal Access Door
 • Cut-out: 14½" h x 20½" w



12-18-SD
12" x 18" Horizontal Access Door
 • Cut-out: 12½" h x 18½" w



24-17-SD
24" x 17" Vertical Access Door
 • Cut-out: 24½" h x 17½" w



20-14-SD
20" x 14" Vertical Access Door
 • Cut-out: 20½" h x 14½" w



18-12-SD
18" x 12" Vertical Access Door
 • Cut-out: 18½" h x 12½" w



20-14-SDV
20" x 14" Access Door w/ Louvers
 • Cut-out: 20½" h x 14½" w

AMERICAN OUTDOOR GRILL LIMITED WARRANTY

- AOG warrants your grill to be free from defects in material and workmanship.
- AOG stainless-steel burners and stainless-steel barbecue housings are warranted for as long as the original purchaser owns them -- **LIFETIME**.
- AOG Diamond sear stainless-steel cooking grids are warranted for **FIFTEEN (15) YEARS**.
- AOG valves, controls, manifolds and vent hood housings are warranted for **TEN (10) YEARS**. (Except as noted below.)
- AOG backburners, rotisserie kits, vaporizer panels, and exterior Glass Fiber Reinforced Concrete (GFRC) grill island systems are warranted for **THREE (3) YEARS**.
- AOG ignition systems (excluding batteries), electronic components (including vent hood controls and blowers), grill parts and accessories are warranted for **TWO (2) YEARS**.

THE ROBERT H. PETERSON CO. RESERVES THE RIGHT TO AMEND PRODUCT SPECIFICATIONS WITHOUT PRIOR NOTICE.



AMERICAN OUTDOOR GRILL

